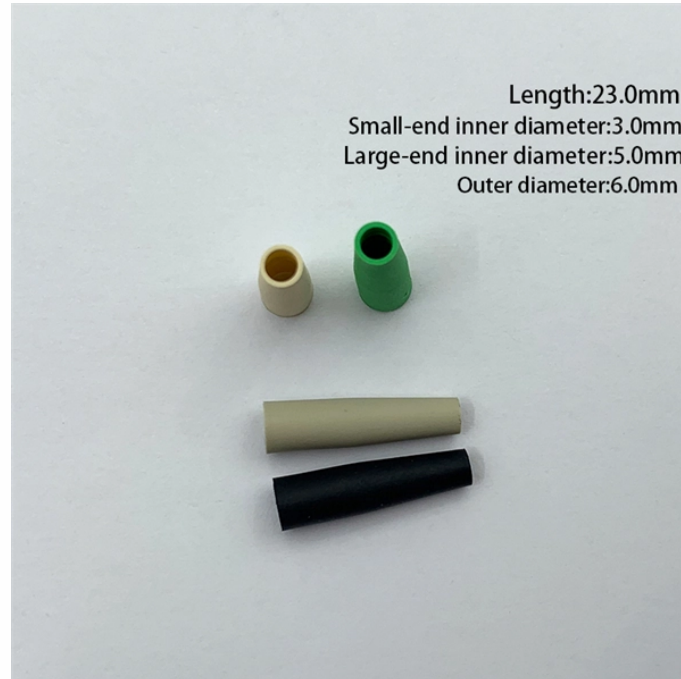


Specifications of copper core wires for distribution boxes



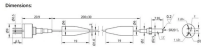
Overview

ASTM Standards: B-1 (hard drawn), B-3 (soft or annealed), B-49 (copper rod)
Packaged on convenient spools (per ASTM B49). RoHS Compliant Soft Drawn:
Easily formed into place. We set worldwide standards through products and
process innovations. The product portfolio includes all ranges of copper wires.
Get precise technical data and specifications on Rama Copper wires, designed
for electrical applications requiring top reliability, durability, and performance.
The cable is suitable for use in wet or dry locations at temperatures not
exceeding 90°C and is dual-rated for 600V or 1000V. 1/0AWG and larger are
approved for cable Abstract:The design, installation, and protection of wire
and cable systems in substations are covered in this guide, with the objective
of minimizing cable failures and their consequences. 14 AWG though 1000
kcmil, insulated for operation from 600 volts though 35 kilovolts.

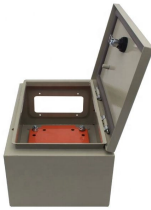
Specifications of copper core wires for distribution boxes



SOFT-DRAWN BARE COPPER conductors are used in overhead electrical transmission; distribution systems for grounding and bonding of electrical ...



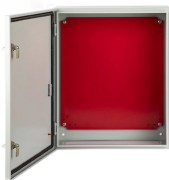
Southwire Company's Power Cable Installation Guide provides installation information for extruded dielectric power cable systems. This guide covers copper and aluminum conductors from No. 14 ...



Dimensional cross-sectional drawings of each cable and cable drum along with technical data and catalogues shall be submitted by the supplier to facilitate evaluation of the offer



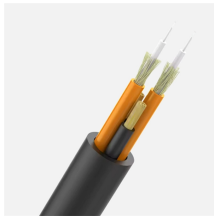
ASTM B-3 Soft or annealed copper wire Meets all U.L. listing requirements for protection and grounding conductors Intended for use in accordance with Article 800-31 (NEC)



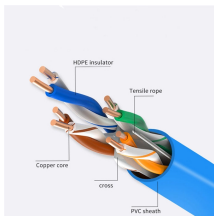
Southwire Industrial



This specification covers the design manufacture, shop testing, loading, transportation and delivery at sub-station site of 33KV, 400Amp, 3Pole & 11KV, 400Amp, 3Pole H.G. Fuse Sets for outdoor ...



Single copper conductor, stranded, insulated with moisture and heat resistant, chemically crosslinked polyethylene (type XHHW-2) and covered with a sunlight resistant, PVC jacket.



Technical Guides Find comprehensive details on fiber and copper cabling products'' specs, applications, and installations



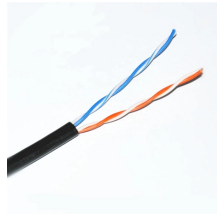
Abstract:The design, installation, and protection of wire and cable systems in substations are covered in this guide, with the objective of minimizing cable failures and their consequences.



LICATION: XHHW-2 cables are primarily used for power distribution in conduit or other recognized raceways for services, feeders, and branch circuit wiring as specified in the National Electr.



Get precise technical data and specifications on Rama Copper wires, designed for electrical applications requiring top reliability, durability, and performance.



Southwire's AC90 is designed for exposed and concealed wiring such as ventilated cable trays and other dry locations, where the maximum conductor temperature will not exceed 90°C.



Copperweld® bimetallics have been made in the USA 100 years using the highest-quality steel and oxygen-free copper to provide superior performance and reliability.

Contact Us

For more information, pricing, or custom solutions, please contact us:

Website: <https://www.indzawo.co.za>

Email: sales@indzawo.co.za

Phone: +27 71 296 8473

Address: 22 Quantum Street, Midrand, 1685, Gauteng, South Africa

This document is for informational purposes only. Specifications subject to change without notice.

