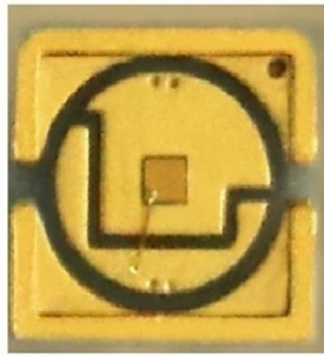


Specifications of Galvanized Cable Tray Fasteners



Specifications of Galvanized Cable Tray Fasteners



Some applications may require the cable tray to support the weight of a single, dead object in addition to the cable loads. Specifications typically require this to be applied at the midpoint of the span between ...



TechLine Mfg. provides a range of threaded fasteners for any application. Choose from zinc-plated, stainless steel, galvanized, and aluminum finishes. Contact us today!



Support accessories for HDG cable trays such as bends, tees, reducers, junctions, and fasteners are hot-dip galvanized to match the trays. Supports include HDG ...



General: Except as otherwise indicated, provide metal cable trays, of types, classes and sizes indicated; with splice plates, bolts, nuts and washers for connecting units.



All design characteristics, specifications, tolerances and similar information are subject to change without notice.



Hardware shall be zinc plated in accordance with ASTM B633 SC1 for pre-galvanized cable trays, or Chromium Zinc in accordance with ASTM F-1136-88 for hot dip galvanized cable trays.



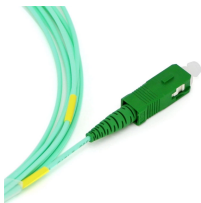
Cable trays, available in hot-dip galvanized, pre-galvanized, stainless steel (304-316), Corten-A, aluminum, and electrostatically powder-coated varieties, can be used in a wide range of ...



Please click the appropriate link below to view the catalog section as a PDF.



Hot-dip galvanized (EN ISO 1461) DG (dipped-galvanised) Whenever cable support systems are exposed to the elements and/or caustic substances (such as petrochemical applications), they are ...



Splice plates. Splice plates shall be supplied with the straight sections of the tray and are installed with four sets of nuts/bolts that are also supplied. Splice plates fit internally to the tray and are one-piece ...



NEMA VE 1-2017 Specifies requirements for metal cable trays and associated fittings designed for use in accordance with the rules of Canadian Electrical Code, Part I and the National Electrical Code®



Cable tray length is selected based on the load to be supported, the distance between the supports (also referred to as the span), and handling and installation constraints.

Contact Us

For more information, pricing, or custom solutions, please contact us:

Website: <https://www.indzawo.co.za>

Email: sales@indzawo.co.za

Phone: +27 71 296 8473

Address: 22 Quantum Street, Midrand, 1685, Gauteng, South Africa

This document is for informational purposes only. Specifications subject to change without notice.

