

## Spanish electrical distribution box dimensions



### Overview

Esta guía explica las dimensiones estándar de las cajas eléctricas por tipo, compara los tamaños comunes y te ayuda a seleccionar la caja correcta para aplicaciones residenciales, comerciales e industriales ligeras. Surface enclosures with a capacity of 4, 6, 8, 12, 18, 24, 36 and 54 modules with transparent window. Halogen-free plastic materials. Base and frame: ABS RAL 7035 grey. Transparent window: PC tinted window, with UV protection. MARECHAL ELECTRIC works with you every day to provide solutions that meet your professional requirements. MARECHAL® junction, branch, and distribution boxes: reliable and secure. Welcome to enquire to us by formal email, so that we can receive your information smoothly and reply you promptly. -Maximum operating voltage:1000 V / AC /1500 V DC. We also have other elements to complete the installation, such as IP68 / IP69 manhole or bypass boxes protected against water.

## Spanish electrical distribution box dimensions



Understanding standard electrical box sizes and dimensions helps engineers and installers select the appropriate enclosure for each application. Choosing the correct electrical box ...



Learn standard dimensiones de caja eléctrica for outlets, switches, and junction boxes. Compare sizes, depths, volume, and clearance for safe installations.



Designed and assembled with precision to ensure safe and efficient distribution of electrical energy. Available in different sizes and configurations to meet the needs of each project.



Spanish hot sale CE Certification IP65 Surface distribution boxes from Model:IP65;Degree of protection:IP65; Resistance to impact:IK08; Glow wire resistance:ABS:650°C Polycarbonate:750°C; ...



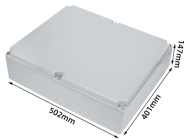
Spanish hot sale CE Certification IP65 Surface distribution boxes from ...



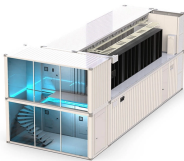
Clear detailed description of each size and easy to select with the ordering codes. Box with four studs and adjustable nuts for easy fit / easy removal of the pan assembly. Generous wiring space. Easy fit ...



ELECTRICITY At Pinazo all of our work frames are manufactured in accordance with current ITC and REBT standards. Each and every one of our tables are tailor-made.



Distribution, surface or recessed boxes. In them you can install the protection elements, differentials and magnetothermics. We also have other elements to complete the installation, such as IP68 / IP69 ...



MARECHAL® junction, branch, and distribution boxes: reliable and secure solutions to optimize your professional electrical installations.



TH35x7,5 symmetrical rail in enclosures with one row of modules and a compact frame in enclosures with two or more rows of modules. They are supplied assembled in all references.

## Contact Us

For more information, pricing, or custom solutions, please contact us:

Website: <https://www.indzawo.co.za>

Email: [sales@indzawo.co.za](mailto:sales@indzawo.co.za)

Phone: +27 71 296 8473

Address: 22 Quantum Street, Midrand, 1685, Gauteng, South Africa

This document is for informational purposes only. Specifications subject to change without notice.

