

Small busbar switching relay



Overview

The SEL-700BT has built-in logic for motor bus transfer, which allows for the instantaneous transfer of load to an auxiliary feeder from the primary feeder during faults to the primary feeder. The relay pro.



Small busbar switching relay



MilesTek offers MIL-STD-1553B Bus Switching Relays available in 5v and 28v.



GRB100 can be applied for various busbar systems, such as single busbar, double busbar, one and a half busbar, four bus-coupler busbar, ring busbar and busbar with transfer bus.



"This Harmony RXZ bus jumper with separate contacts is compatible with socket RSX." "Its simple modular design facilitates post installation servicing, ...



The DBR1000 and DBR2000 Series of bus switching relays are designed for use in the test and simulation of MIL-STD-1553 data buses. They are particularly useful in reconfiguring bus systems.



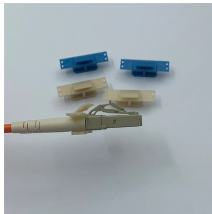
The TiDL and SV relays can be configured with a five-port Ethernet card supporting PRP, HSR, or failover functionality to increase system availability, as well as PTPv2 on process bus or station bus ...



REB611 is a dedicated busbar protection relay designed for phase-segregated short-circuit protection, control, and supervision of single busbars. REB611 is used in high-impedance-based applications ...



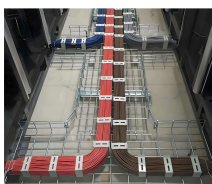
The Data Bus relay/switches family of products are typically used to switch MIL-STD 1553 signals between Bus A and Bus B. The switching is accomplished without the interruption of databus protocol.



Eliminate the task of manually switching cables using MilesTek Relay Devices. These act as on-off switches to connect and disconnect individual remote terminals or entire bus segments to/...



The relay allows automatic motor bus transfers using fast, in-phase, residual, and fixed-time methods to keep processes running without requiring a cold start. It is also possible to manually transfer load ...



"This Harmony RXZ bus jumper with separate contacts is compatible with socket RSX." "Its simple modular design facilitates post installation servicing, modification and adaption of machines by non ...



The GRB200 low impedance differential relay for busbar protection is designed to provide very reliable, high-speed and selective protection for various types of busbar system.



The GRB200 low impedance differential relay for busbar protection is designed to provide very reliable, high-speed and selective protection for various types of ...

Contact Us

For more information, pricing, or custom solutions, please contact us:

Website: <https://www.indzawo.co.za>

Email: sales@indzawo.co.za

Phone: +27 71 296 8473

Address: 22 Quantum Street, Midrand, 1685, Gauteng, South Africa

This document is for informational purposes only. Specifications subject to change without notice.

