


## Slovakian computer room cold aisle explosion-proof type



### Overview

C1D2 (Class I, Division 2), C2D2 (Class II, Division 2), and ATEX certified computers are designed to operate safely in these conditions, reducing the risk of ignition and ensuring compliance with safety regulations. Beyond implementing basic measures such as sealing moisture out of the data center and improving air flow, aisle containment to prevent the mixing of hot and cold air stands out as a method that can dramatically reduce energy costs, minimize hot spots and improve the carbon footprint of data. Hot aisle and cold aisle containment prevent cold and hot air from mixing by isolating “aisles” between server racks. Image source: Siemon In all aisle-containment systems, a computer room air handler (CRAH) circulates chilled air through the aisles. These systems can be arranged in the following. TRAX hot aisle / cold aisle data center curtains are the industry leading low cost containment solutions. Click the button below to request a quote or call us directly.


## Slovakian computer room cold aisle explosion-proof type



Pre-Terminated Patch Panel

- Standard 19" width
- Full 144 Ports in 1U
- IP54 Rating Dust Proof

Containment panels or strips create a partition to isolate either the server supply air (cold aisle) or the exhaust air (hot aisle). Preventing the supply and exhaust air from mixing significantly increases the ...



Hot aisle containment is made from light duty aluminum profile and thermal insulation PC board, has better heat dissipation performance than cold aisle containment in high density data centers, to ...

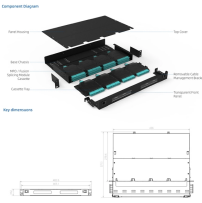

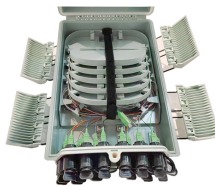


Diagram illustrating Hot Aisle Containment (HAC) and Cold Aisle Containment (CAC) systems. The HAC diagram shows a server rack with a hot aisle containment strip in front, and the CAC diagram shows a server rack with a cold aisle containment strip in front. Labels include: Hot Aisle Containment, Cold Aisle Containment, Hot Aisle Containment Strip, Cold Aisle Containment Strip, Hot Aisle Containment Panel, Cold Aisle Containment Panel, Hot Aisle Containment Strip, Cold Aisle Containment Strip, Hot Aisle Containment Panel, Cold Aisle Containment Panel.

Depending on your facility's layout, Armstrong Aisle Containment Solutions offer both Hot Aisle Containment (HAC) and Cold Aisle Containment (CAC) systems to suit new builds or retrofit ...



TRAX hot aisle / cold aisle containment curtains are available in flexible strip and softwall panel formats that can be customized to meet your specific requirements.



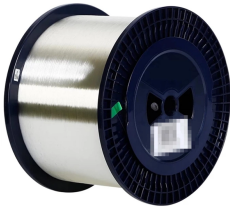
C1D2 (Class I, Division 2), C2D2 (Class II, Division 2), and ATEX certified computers are designed to operate safely in these conditions, reducing the risk of ignition and ensuring compliance with safety ...



Get expert hot and cold aisle containment solutions for your data centres with Ardmac. Our tailored approach maximises efficiency.



As an addition to a conventional precision cooling system, cold aisle containment consistently separates cold and warm areas without requiring structural changes to the data center.



Typically, this involves installing doors at the ends of the aisles and a roof or panels above them, creating a sealed environment for the incoming cool air from computer room air ...

Waterproof and dustproof, reliable and safe

The outer classic sink design allows the sealing ring of the cabinet and door to be mechanically compressed without leaving a trace of gaps



Hot and cold aisles in the data center are part of an energy-efficient layout for server racks and other computing equipment. The goal of a hot/cold aisle configuration is to manage airflow ...



Server rooms need strong cooling and fire protection systems. QRFS examines aisle containment systems and how they can impede fire protection.

## Contact Us

For more information, pricing, or custom solutions, please contact us:

Website: <https://www.indzawo.co.za>

Email: [sales@indzawo.co.za](mailto:sales@indzawo.co.za)

Phone: +27 71 296 8473

Address: 22 Quantum Street, Midrand, 1685, Gauteng, South Africa

This document is for informational purposes only. Specifications subject to change without notice.

