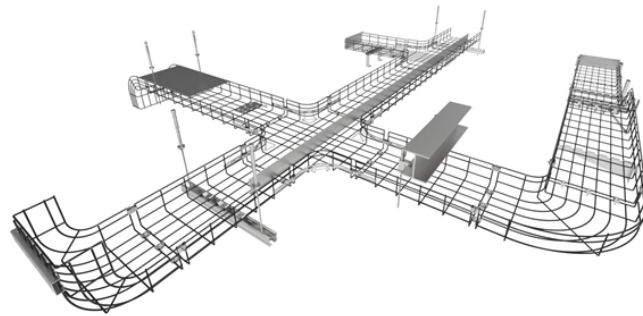


Slovakia Project Quotation SFP Optical Module DML



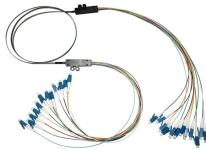
Slovakia Project Quotation SFP Optical Module DML



cost effective duplex LC module interface. The receiver section us a VCSEL laser, with up to 9dB link budget to ensure a 1000Base ethernet up to 550M application.



The module supports data rates from 9.95 Gbps to 11.3 Gbps and is provided in an SFP+, MSA-compliant package. The optical transmitter utilizes the Lumentum ...



Extended reach SFP+ - Multimode and single-mode fiber transceivers with CWDM and DWDM options for metro and regional optical transport over long distances.



SOPTO SFP Optical Transceivers are hot-swappable, compact media connectors that provide instant fiber connectivity for your networking gear. They are a cost effective way to connect a single network ...



Actual product appearance and specifications may vary. *Product performance is based on testing in a controlled environment. Your results may vary due to several external and environmental factors. For ...



Need a quote or customized solution? Learn more here. How Can We Help? Advantech's Small form-factor pluggable (SFP) transceiver modules provide a variety of speed, distances, and wavelengths ...



Featuring a single +12V DC power supply and a SMA RF input connector, this ...



Customized low & high frequency Optical Delay Line (ODL) solutions for testing & calibrating RADAR and Altimeter systems. Our common HTML, REST and SNMP remote management system ...



Featuring a single +12V DC power supply and a SMA RF input connector, this module is easy to operate and integrate. The module can be controlled remotely via the RS485 interface. Wavelength other ...



Moxa's small form-factor pluggable transceiver (SFP) Ethernet fiber modules for Gigabit Ethernet provide coverage across a wide range of communication distances.



LINK-PP LS-CW2710-40I SFP+ 10G CWDM Duplex LC/UPC Optical Transceiver Module for Transmission (SMF, 1270nm, 40km, Industrial, DOM) The SFP+ transceivers are high performance, ...



The module supports data rates from 9.95 Gbps to 11.3 Gbps and is provided in an SFP+, MSA-compliant package. The optical transmitter utilizes the Lumentum tunable ILMZ chip to provide a high ...

Contact Us

For more information, pricing, or custom solutions, please contact us:

Website: <https://www.indzawo.co.za>

Email: sales@indzawo.co.za

Phone: +27 71 296 8473

Address: 22 Quantum Street, Midrand, 1685, Gauteng, South Africa

This document is for informational purposes only. Specifications subject to change without notice.

