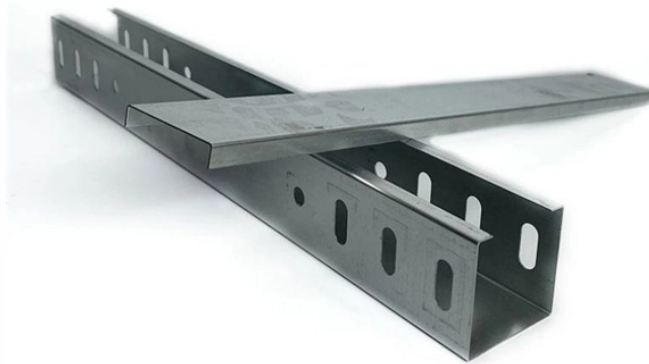


Sino-European power distribution box size and cost performance



Overview

In contrast to traditional civil substations, this innovative box-type variant requires only 1/10 to 1/5 of the space, drastically reducing design complexity, construction workload, and overall project costs, while simultaneously boosting operational efficiency. American, European, and Chinese box-type substations represent distinctly different philosophies in the realm of power distribution. The product has the characteristics of strong complete set, small footprint, small investment. Embrace a more sustainable and cost-effective approach without sacrificing quality or performance. Suited for diverse distribution frameworks, it excels in ring network systems, dual power supplies, or radial terminal distribution setups, providing unmatched flexibility and adaptability. These cover over 72 million kilometres in total. Together these lines make up the global electric power T&D equipment market, which is valued at US\$151. In addition, in 2021, energy market prices have started to soar throughout the continent and the invasion of Ukraine in February 2022 has sparked fire on an already tense situation.

Sino-European power distribution box size and cost performance



Discover our efficient box-type power substation—compact, safe, and reliable. Ideal for factories, airports, highways, and more.



It specifically highlights key contrasting features between American (Pad Mounted) and European (Compact) box-type substations, including size, structure, cooling methods, protection ...



The number of power lines is projected to increase to meet the rising customer needs. In parallel, supergrid development and renewables will increase the deployment rate of very long-distance grids.



The JRC has since 2015 monitored developments in the distribution grid area, including the evolving role of the Distribution System Operator (DSO) with the aim to contribute to a better understanding of the ...



Technical specifications and design selection directly determine the performance, service life, and cost of a box-type substation. Transformer selection should prioritize energy-efficient models ...



In contrast to traditional civil substations, this innovative box-type variant requires only 1/10 to 1/5 of the space, drastically reducing design complexity, construction workload, and overall project costs, while ...



BXW series preassembled box-type substation (European box-type transformer) is an outdoor power distribution complete set composed of high-voltage switchgear, power transformer and low-voltage ...



Unlike traditional civil substations, this innovative box-type version demands only 1/10 to 1/5 of the space, dramatically reducing design efforts, construction workload, and overall project expenses. ...



The power system benefits greatly from the considerable impact of these reinforcements, as their benefits outweigh their costs. By increasing cross-border exchange capacity, countries can better ...



The European box type is built for flexibility, long-term reliability, and easy maintenance, while the American box type emphasizes space efficiency and lower initial cost.

Contact Us

For more information, pricing, or custom solutions, please contact us:

Website: <https://www.indzawo.co.za>

Email: sales@indzawo.co.za

Phone: +27 71 296 8473

Address: 22 Quantum Street, Midrand, 1685, Gauteng, South Africa

This document is for informational purposes only. Specifications subject to change without notice.

