

## Single-phase grounding fault in cable tray



## Single-phase grounding fault in cable tray



Electrically paralleling the single conductor EGC with the Cable Tray by bonding the single conductor EGC to the cable tray every 50 to 100 feet produces an installation that may provide some degree of ...



The meaning of SINGLE is not married. How to use single in a sentence.



one only; unique; sole: a single example. of, pertaining to, or suitable for one person only: a single room. solitary or sole; lone: He was the single survivor. unmarried: a single man. pertaining to the ...



In this article, we explore the hazards of insufficient cable tray grounding, highlight the importance of regular inspections, and provide actionable solutions tailored to different environments.



Single (mathematics) (1-tuple), a list or sequence with only one element Single person, a person who is not in a committed relationship Single precision, a computer numbering format that occupies one ...



These installations must be bonded per NEC 392.7(A) which states: "Metallic cable trays that support electrical conductors shall be grounded as required for conductor enclosures in accordance with ...



If the cable trays cross section area is insufficient for the protective device rating, the cable tray can't be used as the EGC and a separate EGC single conductor cable must be installed in the cable tray or ...



You use single to indicate that you are considering something on its own and separately from other things like it.



Definition of single adjective in Oxford Advanced Learner's Dictionary. Meaning, pronunciation, picture, example sentences, grammar, usage notes, synonyms and more.



If your EGC is the raceway or cable tray containing the conductors (rather than a wire-type EGC), it will be larger than the phase conductors and you don't need to bother with the table.



SINGLE definition: 1. one only: 2. not married, or not having a romantic relationship with someone: 3. considered on.... Learn more.



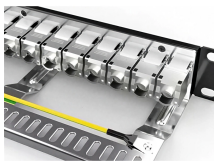
A bare copper equipment grounding conductor should not be placed in an aluminum cable tray due to the potential for electrolytic corrosion of the aluminum cable tray in a moist environment.



Our solutions emphasize mandatory grounding and bonding for metallic trays, firestop systems at penetrations, and mesh tray options that reduce installation time while maintaining ...



single definition: one only, not multiple. Check meanings, examples, usage tips, pronunciation, domains, and related words. Discover expressions like "single out", "hit single", "single and ready to mingle".



Define single. single synonyms, single pronunciation, single translation, English dictionary definition of single. adj. 1. Not accompanied by another or others; solitary.



In addition to providing an electrical connection between the cable tray sections and the EGC, the grounding clamp mechanically anchors the EGC to the cable tray so that under fault current ...



Synonyms: unmarried, unpartnered, available  
Forms often ask if a person is single, married, divorced or widowed. In this context, a person who is dating someone but who has never ...



Single definition: Not accompanied by another or others; solitary.



The document discusses grounding and bonding practices for metallic and non-metallic cable trays. Metallic cable trays must be grounded and can serve as an ...



This comprehensive guide delves into the complexities of cable tray grounding, offering in-depth insights into its importance, principles, design considerations, installation best practices, and ...

## Contact Us

For more information, pricing, or custom solutions, please contact us:

Website: <https://www.indzawo.co.za>

Email: [sales@indzawo.co.za](mailto:sales@indzawo.co.za)

Phone: +27 71 296 8473

Address: 22 Quantum Street, Midrand, 1685, Gauteng, South Africa

This document is for informational purposes only. Specifications subject to change without notice.

