

Single-mode polarization-maintaining fiber coupler



Single-mode polarization-maintaining fiber coupler



This polarization-maintaining fiber is optimized for fiber optic gyroscope (FOG) applications. It is designed for optimal performance over a wide temperature range and with a small coil radius.



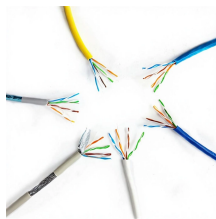
The F-916 Polarization Maintaining Fiber Coupler offers coupling into single-mode PM optical fibers in the same way as Model F-915, but adds a rotatable chuck mount for coupling laser light to the ...



Thorlabs offers a varied selection of single mode (SM), polarization-maintaining (PM), multimode (MM), and double-clad fiber couplers, as well as 1x8 and 1x16 SM PLC splitters; 1x4, 1x8, and 1x16 PM ...



Our premium-grade couplers and splitters are compatible with a variety of fiber types, including single-mode (SM), multimode (MM), polarization-maintaining (PM), and double-clad (DC) fibers.



A polarization-maintaining fiber guides two polarization modes but is designed to prevent coupling between them. In contrast, a single-polarization fiber is designed to strongly attenuate one ...



The coupler features precise splitting ratio, low additional loss, high return loss, excellent polarization-maintaining performance, and operational stability. Each LBTEK coupler undergoes rigorous testing ...



For standard single-mode fibers the light is guided in two principle states of polarization. Imperfections in the fiber do lead, however, to random power transfer between the two principle states of polarization ...



When coupling into single-mode fibers, the laser beam couplers should produce a diffraction-limited spot that matches the mode field diameter and the numerical aperture of the fiber in order to achieve ...



When the cores of two polarization-maintaining optical fibers are close enough (usually within a few microns), the light field transmitted in one optical fiber will penetrate into the other optical fiber in the ...



Optizone Technology provides a great variety of polarization maintaining components, like single mode standard coupler, WDM, optical isolator, optical circulator.

Contact Us

For more information, pricing, or custom solutions, please contact us:

Website: <https://www.indzawo.co.za>

Email: sales@indzawo.co.za

Phone: +27 71 296 8473

Address: 22 Quantum Street, Midrand, 1685, Gauteng, South Africa

This document is for informational purposes only. Specifications subject to change without notice.

