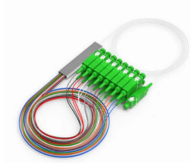


Single-mode fiber attenuation over 20 km



Single-mode fiber attenuation over 20 km



Attenuation, or signal loss over distance, is the primary restriction. While modern single-mode cables achieve under 0.5 dB per kilometer at 1550nm, light absorption and scattering still ...



consisting of only one part, element, or member: a single lens. sincere and undivided: single devotion. separate, particular, or distinct; individual: Every single one of you must do your best. It's the single ...



Single definition: Not accompanied by another or others; solitary.



The acceptable dB loss for single mode fiber can vary depending on several factors, including the specific application, the length of the fiber, the quality of the components used, and the overall design ...



This calculator helps you estimate the total attenuation (signal loss) in a fiber optic cable link. Here are the details and instructions about each field and how they contribute to the calculation:



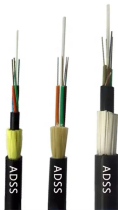
In music, a single or record single is a type of release, typically a song recording of fewer tracks than an LP record or an album. This can be released for sale to the public in a variety of different formats.



This document describes how to calculate the maximum attenuation for an optical fiber. You can apply this methodology to all types of optical fibers in order to estimate the maximum ...



Special offers· Ceramic ferrules· APC Singlemode



Define single. single synonyms, single pronunciation, single translation, English dictionary definition of single. adj. 1. Not accompanied by another or others; solitary.



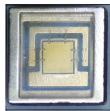
The meaning of SINGLE is not married. How to use single in a sentence.



The attenuation coefficient of both single-mode and multi-mode fibers can be affected by several factors, including the wavelength of the light, the quality of the fiber and its connections, and ...



Synonyms: unmarried, unpartnered, available
Forms often ask if a person is single, married, divorced or widowed. In this context, a person who is dating someone but who has never ...



SINGLE definition: only one in number; one only; unique; sole. See examples of single used in a sentence.



You use single to indicate that you are considering something on its own and separately from other things like it.



Compute fiber attenuation using input and output power. Convert length units, then estimate loss per kilometer. Export CSV or PDF for clean records and sharing.



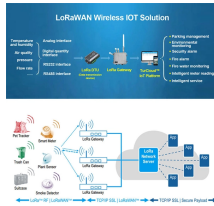
Definition of single adjective in Oxford Advanced Learner's Dictionary. Meaning, pronunciation, picture, example sentences, grammar, usage notes, synonyms and more.



This fiber loss calculator can estimate the total fiber link loss through a particular fiber optic link if the fiber length, the number of splices and number of connectors are known.



Master fiber optic loss budgets with FSI's comprehensive guide. Learn calculation methods, best practices, and optimization techniques for high-performance networks.



Overdriving a receiver is most common when using single-mode products with very low fiber attenuation. It is safe to assume average numbers for fiber loss, but the actual losses should be measured once ...



To be able to judge whether a fiber optic cable plant is good, one does a insertion loss test with a light source and power meter and compares that to an estimate of what is a reasonable loss for that cable ...



SINGLE definition: 1. one only: 2. not married, or not having a romantic relationship with someone: 3. considered on.... Learn more.

Contact Us

For more information, pricing, or custom solutions, please contact us:

Website: <https://www.indzawo.co.za>

Email: sales@indzawo.co.za

Phone: +27 71 296 8473

Address: 22 Quantum Street, Midrand, 1685, Gauteng, South Africa

This document is for informational purposes only. Specifications subject to change without notice.

