

Setting relay protection settings



Setting relay protection settings



Plug setting multiplier of relay is referred as ratio of fault current in the relay to its pick up current. Suppose we have connected on protection CT of ratio 200/1 A and current setting is 150%.



This comprehensive article delves into the key aspects of relay protection in HV/MV substations, including calculations, settings, coordination, selection, and validation, which are all...



Relay coordination is the process of selecting settings that will assure that the relays will operate in a reliable and selective way. In OC relays the coordination is based on the relay time-current ...



In this paper, we discuss the need to maximize motor usage and illustrate steps needed to set the trip and reset settings for motor thermal protection. The time to reset after a normal stop, overload, or trip ...



Learn how to set overcurrent protection relay settings with a clear, step-by-step guide. Understand pickup settings, time dial selection, coordination methods, and best practices for reliable ...



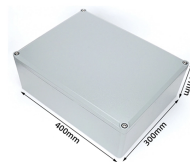
For two-terminal or three-terminal lines where the remote station has a single-circuit breaker with breaker failure protection, set the relay to reach 125% of the Zone 2 relay reach.



To avoid relay mal-operation, set Slope 2 as high as possible. Normally, a high Slope 2 setting causes slow tripping for evolving faults (external-to-internal faults).



PSM and TMS Settings are used to specify the tripping limits of a relay when a fault occurs. How to calculate the settings of the relay?



To configure protective devices such as making a relay setting, having all the consideration of the fault severity and decision-making time, it is important to know parameters, ...



Protection relays employ a wide range of configurable parameters to identify defects & trip the breaker in a controlled & selected manner. Understanding each setting facilitates proper relay ...

Contact Us

For more information, pricing, or custom solutions, please contact us:

Website: <https://www.indzawo.co.za>

Email: sales@indzawo.co.za

Phone: +27 71 296 8473

Address: 22 Quantum Street, Midrand, 1685, Gauteng, South Africa

This document is for informational purposes only. Specifications subject to change without notice.

