

Schematic diagram of a common optical cross-section box



Schematic diagram of a common optical cross-section box



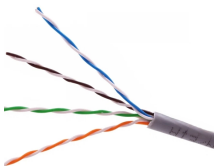
Be among the first to receive important product updates, insights and news.



Editorial use must not be misleading or deceptive.



A further modular box section should be cut horizontally (minimum depth to be a 40mm wall section), with the voids of the cut chamber filled with C32/C40 concrete or mortar.



The following 200 files are in this category, out of 209 total.



Cables - Aggregate cross-sectional area of cables in steel sleeve to be max 48 percent of the aggregate cross-sectional area of the sleeve. Cables to be rigidly supported on both sides of wall assembly.



We recommend you review the FOA Guide sections on fiber optic installation covering basic fiber installation and OSP fiber installation. Designing a network requires working with other personnel ...



Choose from two-dimensional and isometric product drawings in PDF, DXF, VSS formats, and Building Information Modeling (BIM) Objects.



Editorial use must not be misleading or deceptive.



1. OVERVIEW equipment for the realization of optical fiber connection. Mainly used in the junction point between the optical transport networks and the optical transmission equipment, or between the optical ...



Cross section view of an optical fiber. For greater environmental protection, fibers are commonly incorporated into cables. Typical cables have a polyethylene sheath that encases the fiber within a ...



The cell is designed to withstand temperature up to 400 K and pressure up to 15 MPa. A schematic diagram of the cell and the related instruments is shown in Fig. 3.

Contact Us

For more information, pricing, or custom solutions, please contact us:

Website: <https://www.indzawo.co.za>

Email: sales@indzawo.co.za

Phone: +27 71 296 8473

Address: 22 Quantum Street, Midrand, 1685, Gauteng, South Africa

This document is for informational purposes only. Specifications subject to change without notice.

