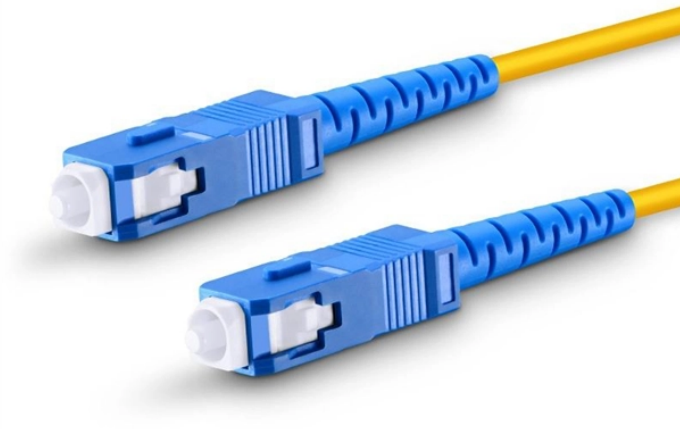


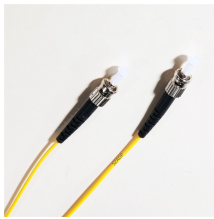
SL Cable Tray



SL Cable Tray



Browse or download the Cable Tray catalog for more information on our line of cable tray and ladder systems. As the cost of structural steel continues to increase, the impact of reducing the quantity of ...



LADDER CABLE TRAY SYSTEM Straight Length ...
*12" all NEMA Classes, 24" NEMA Classes 16A, 16B, 16C, 20A, 20B, 20C. Example: Catalog No. 1B48-06SL-12-09 is a 4-inch load depth ...



Solid and Vented Bottom (Trof) Cable Tray: Our versatile Trof Cable Tray systems are ideal for use in a vast range of settings, with the ability to securely hold and protect cables of many sizes.



Cope Straight length ladder cable tray has aluminum construction for added strength and durability. The 12-ft ladder cable tray with rung spacing of 9-inches, withstands a load of up to 75 lb-ft. It has ...



Choose from our selection of cable trays, including over 850 products in a wide range of styles and sizes. Same and Next Day Delivery.



The flexible coupler provides easy installation without measuring and cutting cable tray side rails. Once installed, the coupler allows for electrical continuity, therefore eliminating the requirement for a ...



Specifications Type: Cable Tray Straight Section
Bottom Type: Ladder Material: Aluminum Siderail
Height - nominal: 6-1/4 in.



Electrical Wholesalers delivers electrical supplies, lighting solutions, and gear for contractors and professionals across Connecticut. Shop top brands with expert local service.



All USTray aluminum cable trays are classified by Underwriters Laboratories as suitable for use as equipment grounding conductors per NEC 392.7 and are certified by UL to meet all requirements of ...



Specifications Type: Cable Tray Straight Section
Bottom Type: Ladder Material: Aluminum Siderail
Height - nominal: 6-1/4 in.



All Wire mesh cable tray systems are made from Stainless Steel and materials which are gentle to cables and tubes.



Refers to the approximate height of a cable tray used for specifying. Selecting a specific height will show cable trays with that height, as well as cable tray accessories compatible with that height.



Ladder cable tray allows for easy additions and movement of powered equipment by allowing for open cable access. Ladder cable trays are designed for ease of use by construction and electrical ...

Contact Us

For more information, pricing, or custom solutions, please contact us:

Website: <https://www.indzawo.co.za>

Email: sales@indzawo.co.za

Phone: +27 71 296 8473

Address: 22 Quantum Street, Midrand, 1685, Gauteng, South Africa

This document is for informational purposes only. Specifications subject to change without notice.

