

Retail of QSFP28 optical modules EML for campus network use



Overview

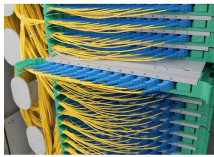
Generally, 100G QSFP28 has the characteristics of high density and low power consumption. It can not only meet the current network needs but also prepare for future network expansion. It is an ideal optical module scheme for large data centers. Fiber Mall provides various high-performance 100G QSFP28 optical modules. All modules are strictly tested. The 100G QSFP28 optical module is suitable for 100G Ethernet, EDR Infiniband and 32G fibre channel. Generally, its size and panel density are the same as 40G QSFP+. The 40G QSFP+ uses four 10Gbps channels, and the 100G QSFP28 module is similar. Four high-speed differential signal channels are adopted, and the data rate supports 25Gbps, up to 40Gbps. After understanding the basic concept of 100G QSFP28, this section will explain in detail the differences of 100G QSFP28 transceiver in terms of standard, laser type, transmission medium and distance. After introducing different types of 100G QSFP28 modules, I believe you have a basic understanding of these modules. Next, let's talk about how

to select 100G QSFP28 transceiver. · When the transmission distance is 5m-100m, it is recommended to select the QSFP28 SR4 optical module. The transmission distance of such modules is 70m on OM3 optical fib.

Retail of QSFP28 optical modules EML for campus network use



Shop high-speed optical transceivers from Unitekfiber. We offer 100% compatible 40G, 100G, and 400G QSFP-DD modules for data centers. Expert technical ...



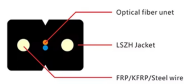
FS offers a growing portfolio of 100G QSFP28 modules. The 100G QSFP28 module solution provides high-performance 100GbE connectivity for data centres, ...



Shop high-speed optical transceivers from Unitekfiber. We offer 100% compatible 40G, 100G, and 400G QSFP-DD modules for data centers. Expert technical support & wholesale pricing.



With data throughput in excess of 28.0 Gbps per lane, our 1X (1 x lane) SFP28 Optical Module (SR/LR) is perfect for use with 25-Gigabit (25G) Ethernet and our 4X (4 x lane) QSFP28 Optical Module ...



Retail formats (also known as retail formulas) influence the consumer's store choice and address the consumer's expectations. At its most basic level, a retail format is a simple marketplace, that is; a ...



In this article, we'll break down what retail means, how retail differs from wholesale, the types of retail businesses, and how the system works from supply chain to store shelves.



Besides, the quad small form-factor pluggable (QSFP28) DR-S optic is compatible with brand equipment (Ethernet switches, routers, and NICs). The 3rd-party 100G QSFP28 DR-S fiber transceiver module ...



The meaning of RETAIL is to sell in small quantities directly to the ultimate consumer. How to use retail in a sentence.



Retail is the process of selling goods or services directly to consumers for personal use. This activity can occur in brick-and-mortar storefronts, online, or through other channels.



LSOLINK offers QSFP28 100G SR4 optical transceivers at wholesale prices, supports customization, and is compatible with all brands.



We explore the evolution of retail stores into living ecosystems and take an in-depth look into the current retail renaissance.



FiberMall offers 100G QSFP28 Optical Transceiver Modules provides 100 Gigabit Ethernet connectivity for up to 100km transmission with the MPO/LC connector.



Find the latest news, headlines, blogs and video about retail, consumers, shopping and retail companies from CNBC .



Our 100G-ER1 QSFP28 transceiver utilizes EML (Electro-absorption Modulated Laser) for transmission and PIN photodiode for receiving, with integrated CDR (Clock and Data Recovery) circuitry to ...



A vertically integrated brand is either 1) a manufacturer that has a network of stores selling their branded products as part of their overall business model such as Nike, Levi's and Bose, or 2) a retailer has ...



Explore how AI clusters are reshaping network architecture, from XPU-centric design to multi-plane scalability, and learn how 800G modules enable high-performance, low-latency interconnects for ...



WolonFiber manufactures strictly MSA-compliant 40G QSFP+, 50G SFP56, and 50G QSFP28 optical interconnects optimized for mission-critical telecommunications and campus deployments. ...



Discover what retail means, how retail stores work, retailing basics, and key retail business models. Learn retail business meaning with simple examples.



The retail landscape of 2025 is being shaped by a perfect storm of technological innovation, changing consumer values, and evolving business models.



Retail Dive provides news and analysis for retail executives. We cover topics like retail tech, marketing, e-commerce, logistics, in-store operations, corporate retail news, and more.



This guide equips network engineers with everything they need to know about QSFP28 optical transceivers — from module types and specifications to switch compatibility, power ...



FS offers a growing portfolio of 100G QSFP28 modules. The 100G QSFP28 module solution provides high-performance 100GbE connectivity for data centres, enterprise core & distribution layers, ...

Contact Us

For more information, pricing, or custom solutions, please contact us:

Website: <https://www.indzawo.co.za>

Email: sales@indzawo.co.za

Phone: +27 71 296 8473

Address: 22 Quantum Street, Midrand, 1685, Gauteng, South Africa

This document is for informational purposes only. Specifications subject to change without notice.

