

Repeated Neutral Connection Distribution Box



Repeated Neutral Connection Distribution Box



Correct wiring methods for circuit breakers within distribution boxes are fundamental to ensuring electrical safety and compliance with established codes. The distinction between 1P and 2P ...



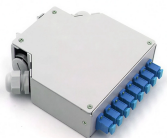
It can be difficult to tell where the neutral or ground wires are located in your breaker box. Here's what you need to know about your breaker box wiring.



The video below describes a code violation that I am not familiar with. It says that neutrals from more than one circuit cannot be tied together in a j-box...



These components provide connection points for neutral and earth wires from various circuits. Proper grounding through earth bars is essential for electrical safety, while neutral bars ...



Learn how to install a distribution box safely and correctly. Covers wiring, placement, standards, and expert tips for a compliant setup.



Among its components, the neutral bus bar is necessary for the safe and proper function of every circuit. It is a conductive metal bar that acts as the common connection point for the return path of current ...



The neutral wire in a breaker box plays a crucial role in the safe distribution of electricity throughout a building. It is an essential component of the electrical system and is connected to the grounding ...



You should see the ground lead and neutral tied to the same bus (the neutral bus bar). Based on your description, it sounds like your panels are wired correctly.



If you need to break that neutral connection, let's say to tie in another branch on to one of those circuits or to delete something from it, you would have to de-energize all of those circuits in order to safely ...



NESC Rules 96C and 97C require that a neutral on multigrounded wye distribution systems have a minimum of four ground connections in each mile. The four-grounds-per-mile rule also applies to ...



Correct wiring methods for circuit breakers within distribution boxes are fundamental to ensuring electrical safety and compliance with established codes. ...

Contact Us

For more information, pricing, or custom solutions, please contact us:

Website: <https://www.indzawo.co.za>

Email: sales@indzawo.co.za

Phone: +27 71 296 8473

Address: 22 Quantum Street, Midrand, 1685, Gauteng, South Africa

This document is for informational purposes only. Specifications subject to change without notice.

