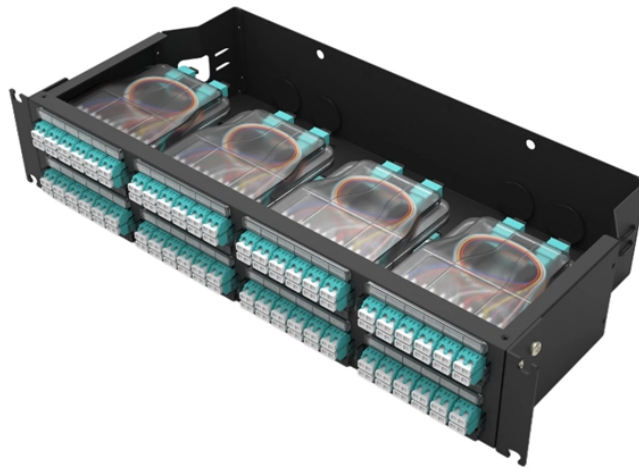


# **Remote Monitoring Type Solar-Powered Communication System for Mines**



## Remote Monitoring Type Solar-Powered Communication System for



AppSPACE enables the development of a wide range of feature-rich apps, including connectivity to third-party devices, local and remote data mining, analysis and execution of business logic, and displays ...



Keep your mining sites secure with Nearon Solar Mast's 24/7 monitoring, our mining eyes are designed for remote locations and built to withstand harsh conditions.



Rich and flexible features designed specifically for the mining industry with features such as voicemail, conference calling, call queuing, system wide paging and call detail records for your underground ...



Explore our devices, systems, applications, accessories, and services seamlessly work together to provide a proven end-to-end mining communications solution.



Mining Industry - Remote Solar Power for Mining and Extraction - We can design, engineer, and integrate a solar powered system for your mining application needs.



Solar CCTV System: A rugged, solar-powered surveillance solution designed for 24/7 monitoring in remote, off-grid locations, offering HD video, thermal imaging, and real-time alerts with zero reliance ...



Explore a robust underground mining broadcast communication solution for safety and remote monitoring across coal, metal, and mineral mines. Supports voice, video, and alarm data ...



By choosing Wirepas, mining operators benefit from a reliable, scalable, and low-maintenance solution that ensures seamless monitoring of equipment, resources, and safety ...



Every Solight security towers comes equipped with remote access, meaning you can check on your cameras any time, anywhere. Just download the app, and you're connected to your live feed in ...



By choosing Wirepas, mining operators benefit from a reliable, scalable, and low-maintenance solution that ensures seamless monitoring of ...



HAWK's AccuSolar Solar Powered Level Monitoring System uses WIFI to communicate up to 1,500 feet to a base station computer. The ideal solution for level applications, from minerals and mining to pulp ...

## Contact Us

For more information, pricing, or custom solutions, please contact us:

Website: <https://www.indzawo.co.za>

Email: [sales@indzawo.co.za](mailto:sales@indzawo.co.za)

Phone: +27 71 296 8473

Address: 22 Quantum Street, Midrand, 1685, Gauteng, South Africa

This document is for informational purposes only. Specifications subject to change without notice.

