

## Relay Protection Platform



## Relay Protection Platform



Compact medium voltage protection relays From overcurrent to advanced protection, these easy-to-use protection relays (formerly known as Easergy P3) offer arc flash protection, LPCTs, LPVTs and ...



A relay is an electromagnetic switch that opens and closes circuits electromechanically or electronically. A relatively small electric current that can turn on or off a much larger electric current operates a relay.



40 years of power system protection expertise—distilled into one relay platform. The upcoming SEL 9 Series platform will be software-configurable into three relay options: line, feeder, and transformer. ...



ETAP eProtect™ is a centralized enterprise protection asset management solution that communicates with field protection relays and ETAP Protection & ...



Relay (Relay Financial), is an all-in-one business banking and money management platform helping businesses understand what they're earning, spending & saving.



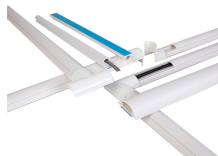
RTSoft Relay protection monitoring, diagnostics and operation assessment system is a comprehensive solution for automating the workflow of protection engineers who service relay protection devices ...



Powered by electromagnets, a relay is simply a mechanical switch, and you'll find them all over a typical house or car. Find out what these simple components are doing in all your electrical ...



Relays are electrically operated switches that open and close the circuits by receiving electrical signals from outside sources. Some people may associate "relay" with a racing competition where members ...



Our Protective Relays and IED Management solution offers an extensive library of complex data models and a master-type library for IEDs. Our solution's advanced integration with Network Model ...



A relay is an electrical switch that can be activated by a low-power signal. Learn more about what is a relay and their many applications here!



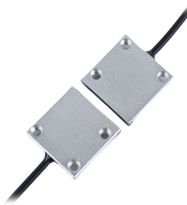
Learn what is a relay, its main components, working principle, common types, and applications. Get usage tips and FAQs about relays for electrical control and safety.



The Multilin 8 Series platform of relays provide advanced management, protection and control for transformer, generator, motor and feeder protection applications.



ETAP eProtect™ is a centralized enterprise protection asset management solution that communicates with field protection relays and ETAP Protection & Coordination modules to manage location, ...



A Relay is a simple electromechanical switch. While we use normal switches to close or open a circuit manually, a Relay is also a switch that connects or disconnects two circuits.



The GR-200 Series is a state-of-the art protection and control IED platform, combining high quality relay design with the latest in digital substation technology.



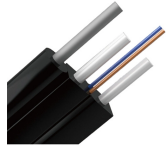
Therefore, this paper designs a monitoring platform for the operation of relay protection equipment at distribution network side under the background of new power system.



Eaton's protective relays provide you with unique microprocessor-based devices that eliminate unnecessary trips, isolate faults, protect motors and breakers, and provide system information to help ...



GE Vernova's Protection, Control, and Metering solutions deliver precise, high-performance automation for today's evolving grid. From advanced relays to multifunction meters, our portfolio helps utilities ...



Learn how a relay works and how you can use it to turn on/off high-power devices with tiny signals. Includes practical circuit examples.

## Contact Us

For more information, pricing, or custom solutions, please contact us:

Website: <https://www.indzawo.co.za>

Email: [sales@indzawo.co.za](mailto:sales@indzawo.co.za)

Phone: +27 71 296 8473

Address: 22 Quantum Street, Midrand, 1685, Gauteng, South Africa

This document is for informational purposes only. Specifications subject to change without notice.

