

## Relay Protection Composition in Four Parts



## Relay Protection Composition in Four Parts



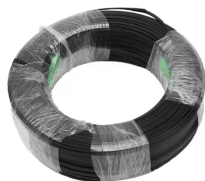
As the protected components of the electrical systems have changed in size, configuration and their critical roles in the power system supply, some protection aspects need to be revisited (i.e. the use of ...



- Classification: Relay protection is classified according to working principle, protection object, function and action time to meet the protection needs of different power systems and equipment.



Traditionally, protective relays were electromechanical devices that utilized induction disk, coils, contacts, and solenoid elements to determine protective characteristics.



Microprocessor-based solid-state digital protection relays now emulate the original devices, as well as providing types of protection and supervision impractical with electromechanical relays.



Inverse time over current relay or simply inverse OC relay is again subdivided as inverse definite minimum time (IDMT), very inverse time, extremely inverse time over current relay or OC relay.



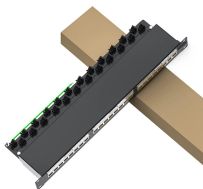
The document discusses relay protection for power systems. It covers: 1) The tasks of a relay protection system including disconnecting faulty parts, sustaining safe ...



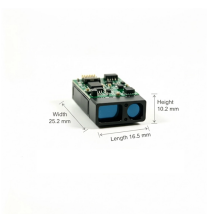
A protection relay is a crucial component of electrical systems that safeguard infrastructure, employees, and equipment from electric problems and malfunctions. It functions as a ...



First part is the primary winding of a current transformer (CT) which is connected in series with the line to be protected. Second part consists of secondary winding of CT and the relay ...



Prepared by Working Group I5 Working Group Assignment presentation of protection and control relaying. The report will identify methodology behind these practices, present issues ...



Operating Principles and Relay Construction: Electromagnetic relays, thermal relays, static relays, microprocessor based protective relays.



Abstract: Information on the concepts of protection of ac transmission lines is presented in this guide. Applications of the concepts to accepted transmission line-protection schemes are also presented.



First part is the primary winding of a current transformer (C.T.) which is connected in series with the line to be protected. Second part consists of secondary winding of C.T. and the relay operating coil. Third ...

## Contact Us

For more information, pricing, or custom solutions, please contact us:

Website: <https://www.indzawo.co.za>

Email: [sales@indzawo.co.za](mailto:sales@indzawo.co.za)

Phone: +27 71 296 8473

Address: 22 Quantum Street, Midrand, 1685, Gauteng, South Africa

This document is for informational purposes only. Specifications subject to change without notice.

