

Rectification Order for Level 3 Distribution Box



Rectification Order for Level 3 Distribution Box



To diagnose and find faults in electrical installations and equipment is probably one of the most difficult tasks undertaken by an electrician. Learn more about Chapter 3: Fault Diagnosis and Rectification ...



A load schedule for each distribution panels, busbar trunking or BBT, tap-off boxes of TOB and switch board (load table format is provided later in this guideline) is required to be prepared.



Electrical Work | Distribution Box fault rectification work | Electricity | Electrical Equipment | LT Distribution BOX | Basic Information | Box Information ...



Distribution Boxes shall have Isolator (Switch Disconnecter) on incoming circuit and Porcelain CUTOOUT fuse base disconnecter on outgoing circuits with necessary interconnecting Bus Bars.



This document summarizes the specifications for 63, 100, 200, and 315 kVA distribution boxes used to control low voltage feeders from distribution transformers.



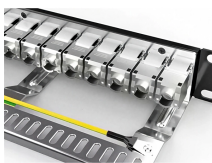
Any defects during that period are subject to rectification and, provided the works at practical completion are free of defects, the employer ought not to interfere in the earlier works.



Insert the test probe through the insulated opening in the top of A post of pair 1 binding posts on the distribution box. (A posts are the left side row of posts of each of the two rows, and B posts are the ...



General Technical Particulars for LT Distribution Boxes : - The L.T. Distribution Boxes should be of the dimensions as per the drawing & details in the table furnished.



UNIFIED FACILITIES CRITERIA (UFC) REVISION SUMMARY SHEET Document: 3-550-01, Exterior Electrical Power Distribution Superseding: UFC 3-550-01, Exterior Electrical Power Distribution, ...



The Applicant Distribution Design Standards (ADS) is a restricted manual. Only those who have read, signed, and submitted the three-page "Non-Disclosure Agreement" will be authorized to receive ...

Contact Us

For more information, pricing, or custom solutions, please contact us:

Website: <https://www.indzawo.co.za>

Email: sales@indzawo.co.za

Phone: +27 71 296 8473

Address: 22 Quantum Street, Midrand, 1685, Gauteng, South Africa

This document is for informational purposes only. Specifications subject to change without notice.

