

## Principle of Fiber Optic Adjustable Attenuator



### Overview

A fiber-optic attenuator is a passive device used in fiber optics to reduce the power level of an optical signal. It is often used in optical fiber communications to adjust the signal to a suitable level for a receiver.



## Principle of Fiber Optic Adjustable Attenuator



Explore the fundamental principles of fiber optic attenuators and gain insights into choosing the right type of optical attenuator to meet network requirements.



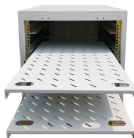
This white paper will shed light on the types, working principles, and applications of fibre optic attenuators, which will help you gain a comprehensive understanding of fibre optic attenuator.



This article will shed light on the types, working principles, and applications of fiber optic attenuators, which will help you gain a comprehensive understanding of fiber optic attenuator.



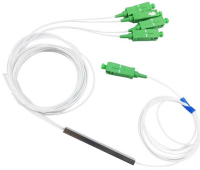
Utilizing the principle of total internal reflection to create disruption, attenuation is achieved through precisely controlling the spacing between fiber end faces (0.2-5.8mm) to cause light ...



Understanding the working principles of fiber optic attenuators is fundamental for grasping their significance in optical communication networks. Fiber optic attenuators operate on the principle of ...



An optical attenuator is a passive device that reduces optical power in a controlled way without changing the signal format. In fiber systems, attenuation is specified in dB (a ratio), while ...



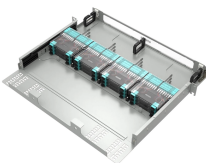
An optical attenuator, or fiber optic attenuator, is a device used to reduce the power level of an optical signal, either in free space or in an optical fiber. The basic types of optical attenuators are fixed, step ...



Common fiber optic attenuators are fixed and adjustable. The former provides a constant attenuation value, while the latter allows users to manually adjust the attenuation according to their ...



A fiber-optic attenuator is a passive device used in fiber optics to reduce the power level of an optical signal. It is often used in optical fiber communications to adjust the signal to a suitable level for a ...



Female-to-female (bulkhead) attenuators are used to join two fiber optic cables or to mount in patch panels. The female-to-female design is sometimes referred to as “fiber optic adapter” type ...

## Contact Us

For more information, pricing, or custom solutions, please contact us:

Website: <https://www.indzawo.co.za>

Email: [sales@indzawo.co.za](mailto:sales@indzawo.co.za)

Phone: +27 71 296 8473

Address: 22 Quantum Street, Midrand, 1685, Gauteng, South Africa

This document is for informational purposes only. Specifications subject to change without notice.

