

Primary Line Wiring Distribution Box

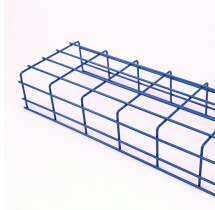


Overview

Primary distribution systems consist of feeders that deliver power from distribution substations to distribution transformers. A feeder usually begins with a feeder breaker at the distribution substation.



Primary Line Wiring Distribution Box



However, many electrical beginners don't know how to install and connect the distribution box. Next, let's introduce the wiring mode, installation method and ...



Correct wiring methods for circuit breakers within distribution boxes are fundamental to ensuring electrical safety and compliance with established codes. The distinction between 1P and 2P ...



Primary distribution systems consist of feeders that deliver power from distribution substations to distribution transformers. A feeder usually begins with a feeder breaker at the ...



Choose from our selection of power distribution boxes in a wide range of styles and sizes. Same and Next Day Delivery.



However, many electrical beginners don't know how to install and connect the distribution box. Next, let's introduce the wiring mode, installation method and size determination of the distribution box, For ...



A newly constructed residential area introduces a 10kV power line to a substation. From the transformer's low-voltage side (0.4kV), power is distributed to a main distribution panel (primary ...



Learn how to install a distribution box safely and correctly. Covers wiring, placement, standards, and expert tips for a compliant setup.



Correct wiring methods for circuit breakers within distribution boxes are fundamental to ensuring electrical safety and compliance with established codes. ...



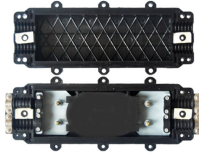
What's the difference between a distribution box and a sub-panel? A distribution box typically refers to the main electrical panel that receives power from the utility service. A sub-panel is ...



The primary distribution box refers to the main distribution box, typically located in the distribution room. These boxes feature bottom entry and exit cables, front-opening doors, and main ...



What are the different types of distribution boxes? The table below provides a comprehensive overview of various distribution box types and highlights their key features and ...



Wiring Direction: Wiring between the main circuit breaker and each branch circuit breaker in the box generally goes on the left, and the wiring out of the distribution box generally goes on the ...

Contact Us

For more information, pricing, or custom solutions, please contact us:

Website: <https://www.indzawo.co.za>

Email: sales@indzawo.co.za

Phone: +27 71 296 8473

Address: 22 Quantum Street, Midrand, 1685, Gauteng, South Africa

This document is for informational purposes only. Specifications subject to change without notice.

