

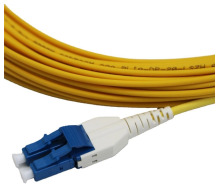
Primary Distribution Box Layout Diagram



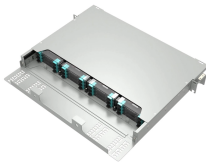
Primary Distribution Box Layout Diagram



Utilities may have some control over and access to the energy stored in electric vehicles attached to the grid.



Primary distribution lines are “medium-voltage” circuits, normally thought of as 600 V to 35 kV. Close to end users, a distribution transformer takes the primary distribution voltage and steps it down to a low ...



Understand distribution boxes (DB boxes) in 5 minutes. Learn about types, components, functions, and uses. Find the perfect DB box for your needs.



While designing the construction of a primary distribution substation, there are a number of different busbar arrangement alternatives for both voltage levels.



By reading the distribution box system diagram, you can understand the electrical connection and configuration of the distribution box, which provides a strong guarantee for the safe ...



They are common in central business districts and high-density areas and are being applied frequently in outlying areas for large commercial services where multiple supply feeders can ...



These diagrams are essential for understanding the layout and components of an electrical distribution system, and they help to ensure the safe and efficient operation of the system.



Additionally, the document covers layout requirements and various configurations of distribution panels used in residential, commercial, and industrial settings.



Several commonly used system topologies are presented here, along with the pros and cons of each. The figures for each of these assume that the distribution and utilization voltage are the same, and ...



These are tapped from the primary feeder main, as shown in the simplified distribution feeder diagram of below Figure. A typical power distribution feeder provides power for both primary and secondary ...

Contact Us

For more information, pricing, or custom solutions, please contact us:

Website: <https://www.indzawo.co.za>

Email: sales@indzawo.co.za

Phone: +27 71 296 8473

Address: 22 Quantum Street, Midrand, 1685, Gauteng, South Africa

This document is for informational purposes only. Specifications subject to change without notice.

