

Price of Cable Tray Bolts



Overview

Specifically designed to provide a rapid and secure fixing when erecting cable trays. The fixed washer to flange nut prevents it from falling into the socket driver. Runway Hold-Down Clamp Kit, Height: 1-1/2", Width: 2", Depth 2. 53", Material: Steel, Finish: Black Powder Coat. Stainless steel cable tray bolts and cable tray nuts are appropriate for use in conditions where there is exposure to moisture or corrosive elements. Bolts and nuts for cable trays, while small components, reflect broader shifts towards durability, efficiency, and supply chain resilience. Understanding these trends is crucial for. Quest offers couplers for joining all Quest Cable Trays. Available as a standard nut and bolt.

Price of Cable Tray Bolts



Cable Tray, Divider Strip, 2 Inch, COT30, For cable separation within a single tray.



Cable Tray, Fasteners and Accessories City Electric Supply offers a complete range of cable tray fittings and accessories, designed to provide secure and efficient cable management solutions for ...



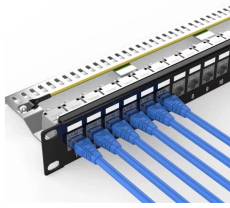
Find high-quality cable tray bolts and nuts for secure installations. Explore top suppliers, materials, and sizes. Click to discover reliable solutions for your project needs.



Compare Cablofil Nut, Bolt & Clamp Assembly, 1/4" Screw, Electro-Zinc Plated Nut, Bolt & Clamp Assembly, 1/4" Screw, Electro-Zinc Plated Only Nut and Bolt in Bag Item #: 0445225 CAT #: ...



Would you like to tell us about a lower price? Specifically designed to provide a rapid and secure fixing when erecting cable trays. The fixed washer to flange nut prevents it from falling into the socket driver.



No. 2 pozi drive combo heads for fast installation. Serrated flange nuts bind to the material to remain tight. Cable tray/roofing bolts with serrated flanged nuts. Cable Tray Bolts & ...



CABLE TRAY STRENGTHENING BAR KIT W/ HARDWARE Quest offers a full line of cable tray accessories. This accessory is for the secure joining of straight lengths. ...



Our cable tray bolts are zinc plated have a cross-slot head and come with serrated flange nuts.

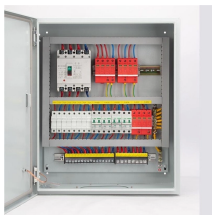


Cable Tray, 2" Depth x 4" Width x 10" Section, Material: Carbon Steel. Finish: Electroplated Zinc.



High-quality ceramic ferrule

Discover cable tray bolts and nuts with CE-certified, corrosion-resistant steel for secure, industrial-grade cable management solutions.



Would you like to tell us about a lower price? Specifically designed to provide a ...

Contact Us

For more information, pricing, or custom solutions, please contact us:

Website: <https://www.indzawo.co.za>

Email: sales@indzawo.co.za

Phone: +27 71 296 8473

Address: 22 Quantum Street, Midrand, 1685, Gauteng, South Africa

This document is for informational purposes only. Specifications subject to change without notice.

