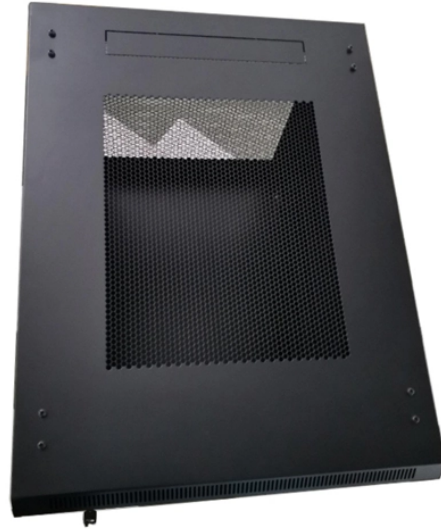


# Indzawo Optic Connect

## PoE switch Linkact



## PoE switch Linkact



It is a Cisco SG200-26P Gigabit Ethernet Smart Switch, 24 10/100/1000 Ports, PoE and 2 Combo Mini-GBIC Ports (SLM2024PT)



Connect your devices according to your actual networking requirements. 100M PoE ports connect to other PoE devices with network cable. 100M network port connects to other switches with ...



It is referencing the LED display on each port. Link/Act means Link and Activity. The Act part is the flashing beat of traffic and the Link is the fact it is lit up. According ...



What is a LINK/ACT port and why are the different from a normal port? Assuming you have setup the same vlans on both switches, you just need to connect them together via a trunk port ...



Take TL-SF1005P as an example. If port 1, 2 and 4 are consuming 15.4 W respectively, and an additional PoE device with 21 W is connected to port 3, the system will cut of the power of port 4 to ...



In a short while, you can connect your IP device to one of the PoE port, the corresponding LINK/ACT LEDs will be turned on in Red, then start flashing. All these means your IP device has ...



In this case, the PoE ports will not supply power to those devices. This feature allows users to freely and safely connect legacy and PoE compatible devices to the switch.

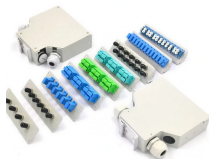
Rear of the optical fiber distribution box



LINK/ACT— (Green) Located on the left of each port. The LED lights steady when a link between the corresponding port and another device is detected, and flashes when the port is passing ...



With built-in PoE+, networking devices such as network hubs, IP phones, and IP cameras can be located anywhere without AC outlets. There's also a built-in full-duplex 10/100/1000 Switch to ...



It is referencing the LED display on each port. Link/Act means Link and Activity. The Act part is the flashing beat of traffic and the Link is the fact it is lit up. According to the specs, this is a ...



Launch a web browser on your PC. Enter the IP address of the switch in the address bar and press Enter. Log in with admin as both user name and password. Now you can configure the switch using ...

## Contact Us

For more information, pricing, or custom solutions, please contact us:

Website: <https://www.indzawo.co.za>

Email: [sales@indzawo.co.za](mailto:sales@indzawo.co.za)

Phone: +27 71 296 8473

Address: 22 Quantum Street, Midrand, 1685, Gauteng, South Africa

This document is for informational purposes only. Specifications subject to change without notice.

