

Indzawo Optic Connect

PoE switch LAN port



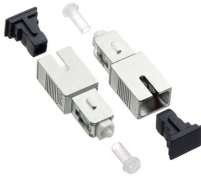
PoE switch LAN port



Learn the key differences between LAN ports and PoE ports. Understand how they work, their advantages, and when to use a router or switch with PoE LAN ports for your network setup.



A Power over Ethernet switch is a network switch that has PoE functionality integrated. Learn about different variations, limitations and benefits of PoE switches.



PoE (Power over Ethernet) ports are designed to transmit data and power on Ethernet lines at the same time. Ordinary LAN ports are only used for data transmission. Although PoE ports ...



PoE Switch Comparison (March 2026) Choosing the right PoE switch depends on understanding your power needs, port requirements, and management preferences. This table compares all 12 switches ...



Lantronix PoE switches power and connect devices like IP cameras, access points, and digital signage—all over a single Ethernet cable. Available in enterprise and hardened grades, they're built ...



Power over Ethernet (PoE) is a technique for delivering DC power to devices over copper Ethernet cabling, eliminating the need for separate power supplies and outlets.



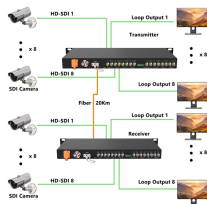
Use an Ethernet cable to connect a LAN port on the PoE switch to a LAN (Ethernet) port on the NVR. This allows the NVR to receive video feeds from the cameras via the switch.



This guide provides an engineering-level overview of switch port technologies, real-world deployment mapping, and detailed selection methodology for campus, enterprise, and data center ...



PoE vs. PoE+ vs. PoE++: Basics of Them What is PoE? PoE switches (Type 1) comply with the IEEE 802.3af standard, which specifies the maximum power delivered over Ethernet cables. ...



A PoE switch delivers both data and electrical power to connected devices through a single Ethernet cable, removing the need for separate power adapters or dedicated electrical outlets at every device ...

Contact Us

For more information, pricing, or custom solutions, please contact us:

Website: <https://www.indzawo.co.za>

Email: sales@indzawo.co.za

Phone: +27 71 296 8473

Address: 22 Quantum Street, Midrand, 1685, Gauteng, South Africa

This document is for informational purposes only. Specifications subject to change without notice.

