

PoE power supply distance of the switch



Overview

The standard PoE switch distance limit is 100 meters, as defined by Ethernet transmission properties. When the transmission distance exceeds 100 meters, data delay, packet loss, etc. Because the farther the distance, the greater the resistance, the higher the requirements. In PoE (Power over Ethernet) technology, the Ethernet link between the Power Sourcing Equipment (PSE) and the Powered Device (PD) has a clearly defined maximum distance limit—100 meters (328 feet). The pair 1-2 act as the positive polarity, while the pair 3-6 act as the negative polarity.

PoE power supply distance of the switch



The fact is that the maximum transmission distance of a PoE switch mainly depends on the data transmission distance. When the transmission ...



Catherine Optical Communications Engineer PoE Transmission Distance The typical transmission distance for PoE is up to 100 meters using standard Ethernet cables. However, many ...



Discover the PoE Distance Limit: Learn how Power over Ethernet (PoE) extends its reach, factors impacting distance, and solutions to maximize power delivery.



Major manufacturers like Huawei have advanced PoE switches (e.g., Huawei S5700 & S6700 series) that comply with IEEE standards while offering enhanced power management. ...



This article will delve into the core limiting factors of PoE power supply distance and provide you with efficient extension solutions based on cutting-edge industry technologies.



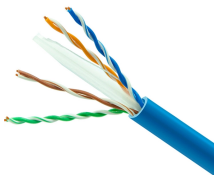
Therefore, the distance of PoE power supply is usually limited to 100 meters. The main reason is that the network cable cannot transmit network signals farther, followed by voltage loss.



IEEE 802.3af (PoE): Offers up to 15.4W, with a maximum Power over Ethernet distance of 328 feet. Since this is based on Ethernet's physical layer specifications, the distance limit aligns with traditional ...



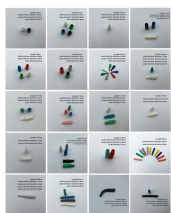
Conclusion The standard PoE switch distance limit is 100 meters, as defined by Ethernet transmission properties. In real-world deployments, this power over Ethernet distance may be ...



This article aims to explain the operational principles and modes of the PoE switch 's power supply, as well as the limited distance and maximum voltages associated with PoE switch ...



Generally, to take a PoE switch as an example, 100 meters is the furthest distance for powering that a PoE switch can reach. The PoE transmission distance varies with different network ...



The fact is that the maximum transmission distance of a PoE switch mainly depends on the data transmission distance. When the transmission distance exceeds 100 meters, data delay, ...

Contact Us

For more information, pricing, or custom solutions, please contact us:

Website: <https://www.indzawo.co.za>

Email: sales@indzawo.co.za

Phone: +27 71 296 8473

Address: 22 Quantum Street, Midrand, 1685, Gauteng, South Africa

This document is for informational purposes only. Specifications subject to change without notice.

