

Pipeline tray installation price



Overview

The price of FRP trays can range from \$10 to \$50 per meter, depending on the specifications such as size, design, and environmental factors. With our prefabricated modular system, we can engineer, design, fabricate, and install a pre-engineered modular pipe rack in less than six weeks. Conduit and Wire Mesh When you embark on a new construction, you would like to know the prices of things. But the actual price is the cash outlay to the workers to assemble the. Save on total installed costs with Snap Track Ventilated Channel System. Your focus is often on meeting standard requirements and keeping costs competitive for bids. Share Basic Project Information Give suppliers a clear picture of your project right away.

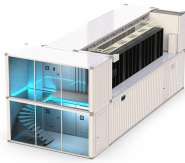
Pipeline tray installation price



Prefabricated modules with base plate mounting for easy installation. Available in single, double, or triple-tier designs.



With our prefabricated modular system, we can engineer, design, fabricate, and install a pre-engineered modular pipe rack in less than six weeks. Our pipe rack modules are pre-engineered for a variety of ...



Costs vary based on tray material (steel, aluminum, or fiberglass), size, design (ladder or solid bottom), and installation complexity. Additional elements like supports, connectors, and ...



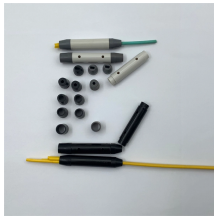
We ship your fully labeled frame components to your prefabrication warehouse (or job site) for easy assembly and then your tradesmen complete installation of all the mechanical pipe, electrical ...



Labor cost, equipment rental, and material price list for civil, electrical and mechanical works. Reference guide for project cost estimate. Find out more!



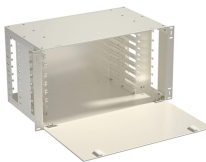
Discover the 2026 cost breakdown for cable trays compared to conduit and wire mesh. Compare material prices, labor savings, and performance to find your best value.



To answer common questions regarding the advantages of Snap Track vs. Conduit, TechLine Mfg. recently published a technical paper on a comparison of total installed costs of Snap Track vs. Conduit.



NEMA VE2 is a cable tray installation guideline which covers receiving and unloading material, storage of material, and general installation practices. Free download of this document is available on the ...



Learn how to get quick and accurate cable tray pricing for your projects. This guide covers new builds, renovations, and custom systems.



We offer complete kits to provide you with cable tray ready to install under new or existing raised floors based on the unique requirements at your facility.

Contact Us

For more information, pricing, or custom solutions, please contact us:

Website: <https://www.indzawo.co.za>

Email: sales@indzawo.co.za

Phone: +27 71 296 8473

Address: 22 Quantum Street, Midrand, 1685, Gauteng, South Africa

This document is for informational purposes only. Specifications subject to change without notice.

