

# Indzawo Optic Connect

## Phosphene Spectrometer



## Phosphene Spectrometer



NIST subscription sites provide data under the NIST Standard Reference Data Program, but require an annual fee to access. The purpose of the fee is to recover costs associated with the development of ...



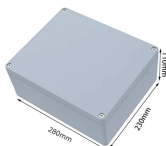
Details: The professional phosphine (PH<sub>3</sub>) detector by FORENSICS has all the advanced features and functions. Phosphine is used as an insecticide and rodenticide for the fumigation of grains, animal ...



**APPLICABILITY:** The working range is 0.013 to 0.6 ppm (0.02 to 0.9 mg/m<sup>3</sup>) for a 16-L air sample. The sampler is not commercially available.



In this study, gas chromatography/mass spectrometry coupled with a headspace sampler (HS-GC/MS) was used to determine the PH<sub>3</sub> content in foods. The stability of the PH<sub>3</sub> standard was evaluated ...



We present a corrosion-resistant quadrupole ion trap mass spectrometer (QIT-MS) designed for trace detection of volatiles in sulfuric acid aerosols, with a specific focus on phosphine ...



RAE Systems colorimetric gas detection tubes enable quick, on-the-spot measurement of a wide range of toxic and combustible gases and vapors. RAE Systems tubes are easy to read, and provide a ...



Gas Detector Gasman-PH3 Phosphine . The Gas Detector Gasman-PH3 is a unique gas meter which protects against a specific gas, inflammable or toxic. The Gas Detector warns with a penetrating ...



With an ultra-bright OLED display and 16GB of data storage, the PM-EC collects concentration, time, date and GPS location, all of which can be downloaded to a PC. Web-based fumigation monitoring to ...



This application note demonstrates the use of an Agilent 8890 GC system coupled with the Agilent 8697 headspace sampler and Agilent 7010 GC/TQ to detect and quantify hydrogen phosphide (phosphine) ...



SISCO professional phosphine detector equipped with advanced sensors, provides accurate and stable readings even at low concentrations, ensuring reliable performance under demanding conditions. ...

## Contact Us

For more information, pricing, or custom solutions, please contact us:

Website: <https://www.indzawo.co.za>

Email: [sales@indzawo.co.za](mailto:sales@indzawo.co.za)

Phone: +27 71 296 8473

Address: 22 Quantum Street, Midrand, 1685, Gauteng, South Africa

This document is for informational purposes only. Specifications subject to change without notice.

