

## Peru Polarization-Maintaining Fiber Optic Cable 8 Cores

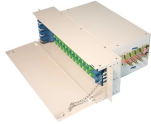


### Overview

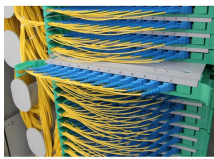
This high-performance Polarization Maintaining (PM) Fiber Patch Cord is engineered for precision-critical optical systems. Using Panda-type PM fibers and carefully aligned connectors, it ensures stable signal integrity even under rigorous environmental changes. Wavelengths covering altogether 360nm to 1800 nm - each fiber with an operational wavelength range of about 100-300 nm. It provides an expert-curated supplier directory, buyer-focused technical background information, and structured selection criteria to support professional procurement decisions.



## Peru Polarization-Maintaining Fiber Optic Cable 8 Cores



Polarization-maintaining, single-mode fiber cable with Gaussian intensity distribution and low-stress fiber connectors. Cut-off wavelengths from 360 nm to 1550 nm



The Polarization Maintaining (PM) Fiber Patch Cable is engineered for high-precision optical applications requiring stable polarization control and minimal optical loss.



FS offers polarization maintaining PM fiber patch cables with excellent birefringence and low attenuation for polarization sensitive fiber optic communication systems.



Polarization-maintaining fibers are specialty fibers with strong built-in birefringence, preserving the linear polarization of an input beam.



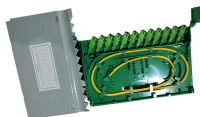
PANDA Polarization Maintaining (PM) fibers are designed with high performance properties including excellent birefringence and low attenuation. Corning offers the broadest portfolio of PANDA PM fibers ...



This high-performance Polarization Maintaining (PM) Fiber Patch Cord is engineered for precision-critical optical systems. Using Panda-type PM fibers and carefully aligned connectors, it ...



PM MPO patch cord is a kind of multi-core PM fiber that is fanned out and connected to MPO connector, it can transmit multiple polarization-maintaining optical signals and keep their polarization orientation ...



In addition to our stocked polarization-maintaining patch cables, we offer a custom fiber optic patch cable service with many options eligible for same-day shipment.



Their design uses two stress applying parts to create an extremely high birefringence, resulting in fiber with excellent polarization maintaining properties. The operating wavelengths range from 480 to 1550 ...



Image of the cross section of a polarization-maintaining optical fiber patch cord, taken with an illuminated microscopic viewer called a fiberscope. The two small, eye-like circles are the stress rods and the ...

## Contact Us

For more information, pricing, or custom solutions, please contact us:

Website: <https://www.indzawo.co.za>

Email: [sales@indzawo.co.za](mailto:sales@indzawo.co.za)

Phone: +27 71 296 8473

Address: 22 Quantum Street, Midrand, 1685, Gauteng, South Africa

This document is for informational purposes only. Specifications subject to change without notice.

