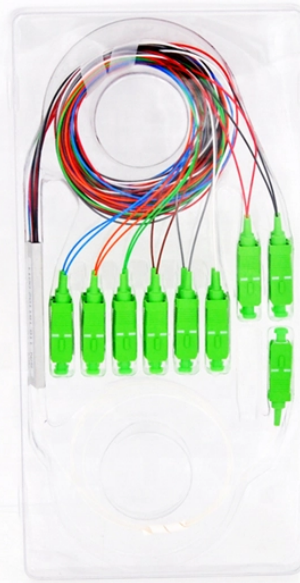


# Performance Comparison of Remote Monitoring Type and Alternative Solutions for Optical Path Switches



## Overview

In the last twenty years, optical networks have witnessed recurrent changes in their management and control architecture. In this paper, we present a historical timeline and a future perspective of the evolution.



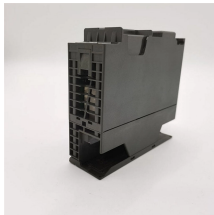
## Performance Comparison of Remote Monitoring Type and Alternativ



Fiber-optic switches are optical switches in the context of fiber optics. The simplest device is an on/off switch with one input and one output, which allows light to ...



We present an efficient method for supervision of fiber point-to-multipoint access networks to serve monitoring and sensing purposes. The method is based on an upgraded passive remote node ...



In this paper, we present a historical timeline and a future perspective of the evolution of optical network management and control deployed for Wavelength Switched Optical Networks ...



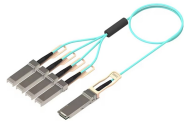
In this paper, we present a review of optical switching techniques capable of meeting the requirements of the next generation of large-scale data center networks.



Recent studies on silicon-integrated optical switches incorporating PCMs are also reviewed. Furthermore, the pros and cons of different types of integrated optical switches with and ...



Comprehensive analysis of optical circuit switching technology for high-demand environments, covering evolution, challenges, and performance metrics.



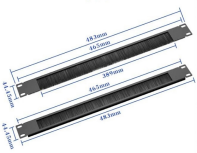
This article provides a head-to-head comparison of how wavelength selective switches stack up against alternative switching and routing approaches, covering performance, operational fit, ...



Optical switches are key components used to route, protect, and monitor fiber optic signals without electrical conversion. G-Link optical switches cover mechanical, MEMS, and matrix architectures, ...



High-precision online testing involves a series of procedures designed to evaluate the performance of optical switches under real-world conditions. These tests encompass parameters ...



With the increasing complexity of communication systems and the requirement for automation to support monitoring efforts, optical switches are a key component in the network.



Fiber-optic switches are optical switches in the context of fiber optics. The simplest device is an on/off switch with one input and one output, which allows light to pass with low insertion loss when open, ...

## Contact Us

For more information, pricing, or custom solutions, please contact us:

Website: <https://www.indzawo.co.za>

Email: [sales@indzawo.co.za](mailto:sales@indzawo.co.za)

Phone: +27 71 296 8473

Address: 22 Quantum Street, Midrand, 1685, Gauteng, South Africa

This document is for informational purposes only. Specifications subject to change without notice.

