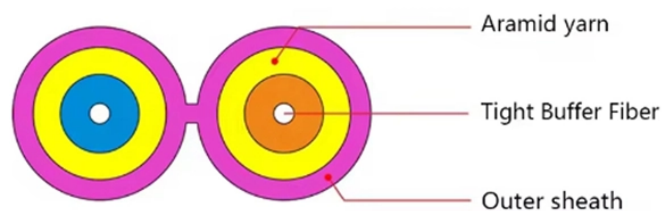


Parallel connection of lines within cable trays



Overview

Parallel runs in cable tray shall comply with the provisions of 392. Connections, taps, or extensions made from paralleled conductors shall connect to all conductors of the paralleled set. 10 (G) provides rules on installing conductors in parallel. maintain spacing or to keep cables in place when the tray is ect the minimum bend ra-dius for cables as they exit the bottom of the cable tray. In case of high power use, to meet the demand of currentAnd in order for the current to be carried at the demanded high powers to be met, the method of parallel. Cable tray (or cable ladder) systems are a popular alternative to electrical conduit systems, as they have an outstanding record for dependable service, design flexibility and cost savings in commercial and industrial applications. headquartered manufacturer with over 130 years of supplying solutions for the electrical and data markets. Hubbell's strength is demonstrated by a long-standing reputation for supplying reliable.

Parallel connection of lines within cable trays



Our wind certification report provides you with list of acceptable B-Line series cable tray supports, fittings and covers based off of the environmental conditions, cable loading, and type of cable tray in your ...



My suggested strategy would be to run the required EGC as a separate conductor, in the same tray. Then tie the cables' factory EGCs to ground on exclusively one side, while wire nutting ...



Connections, taps, or extensions made from paralleled conductors shall connect to all conductors of the paralleled set, grounded and ungrounded, as applicable. Parallel runs in cable trays shall comply ...



Hi, I have an installation where two sets of parallel 400 MCM conductors were installed in a cable tray. They were installed as individual conductors in a...



Conductors can be installed in parallel following specific guidelines. Each segment of the parallel installation must have all circuit conductors within the same enclosure, and grounding conductors ...



It provides rules for acceptable wiring methods that can be installed in cable trays, including conditions for use. It addresses uses permitted and not permitted for cable trays.



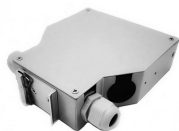
In cases where multiple cables need to be connected parallelly in the same phase; ensuring that the same current goes through all cables is possible by the right phase sequence and the correct ...



Hubbell's NEXTFRAME® Ladder Tray is the effective and widely used cable runway that supports and delivers bundles of cable between cabinets, racks, and closets, along walls, and suspended from ...



In cases where multiple cables need to be connected parallelly in the same phase; ensuring that the same current goes through all cables is possible by the right ...



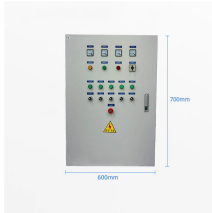
For example: A parallel tray cable feeder is installed in cable tray to a 400 amp distribution panel. At the panel, the cable is installed in conduit (s) for the vertical drop.



This evaluation assumes that both the conduit and the cable tray are serving as the equipment grounding conductor. Where separate equipment grounding conductors are used, the copper ...



When fitting cable trays and their accessories, the products are cut on site to create changes of direction, adjust sections, etc. Damage can also occur during handling; as a result, both the ...



Cable tray length is selected based on the load to be supported, the distance between the supports (also referred to as the span), and handling and installation constraints.



In order to install the cable tray supports, first find the required elevation from the floor to the bottom of the cable tray and establish a level line with a laser or a nylon string.

Contact Us

For more information, pricing, or custom solutions, please contact us:

Website: <https://www.indzawo.co.za>

Email: sales@indzawo.co.za

Phone: +27 71 296 8473

Address: 22 Quantum Street, Midrand, 1685, Gauteng, South Africa

This document is for informational purposes only. Specifications subject to change without notice.

