

Other optical modules in Huawei switches



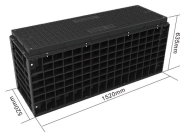
Overview

Huawei offers a wide portfolio: 1G, 10G SFP+, 40G QSFP+, 100G QSFP28. Huawei modules are highly cost-competitive, often at lower pricing than Cisco equivalents. A switch must use optical or copper modules that have been certified for use on Huawei switches. All or part of the products, services and features described in this document may not be within the purchase scope or the usage scope. This article summarizes several solutions for using optical modules with switches and common. Optical modules are widely used in switches, network interface cards (NICs), routers, and other communication devices. During use, reading optical module information helps understand its real-time operating status, enabling faster troubleshooting of link abnormalities. Huawei is not liable for any problem caused by the use of non-certified optical or. 02315233 - Genuine Huawei SFP-FE-SX-MM1310 Optical Transceiver, SFP, 100M/155M, Multi-mode Module (1310nm, 2km, LC)Basic InformationModule name: SFP-FE-SX-MM1310Part Number: 02315233Model: SFP-FE-SX-MM1310Form factor: SFPApplication standard: 100BASE. 02315205 - Genuine Huawei eSFP-FE-LX-SM1310.

Other optical modules in Huawei switches



When using switches, we may encounter many confusions, such as what types of optical modules are needed for different models of Huawei switches, and how to resolve issues encountered ...



A switch must use optical or copper modules that have been certified for use on Huawei S switches. Non-certified optical or copper modules cannot ensure transmission reliability and may affect service ...



Buy Genuine Huawei Optical Modules and Cables from GenuineModules with best price and fast worldwide shipping.



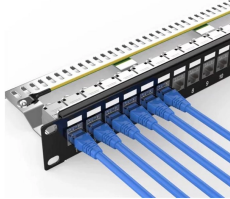
Optical modules are widely used in switches, network interface cards (NICs), routers, and other communication devices. During use, reading optical module information helps understand its real ...



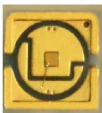
You may learn how to classify and check the optical modules from this article, thunder-link sales team will assist you for further questions about optical modules.



Huawei Data Center Switch Optical Transceiver Portfolio QSFP28 MPO12 Connector Model



A switch must use optical or copper modules that have been certified for use on Huawei switches. Non-certified optical or copper modules cannot ensure transmission reliability and may affect service ...



Huawei CloudEngine 6860 and 16800 The Huawei CloudEngine 6860-HAM access switch offers 48× SFP28 ports and 8× QSFP28 uplinks, and it works with the CloudEngine 16800 ...



Learn how to select the right optical transceiver for your switch or router. Compare SFP, SFP+, QSFP28, Cisco SFPs, and Huawei modules with buying tips.



To ensure seamless connection between optical modules and devices, ETU-Link has invested a lot of resources to build a multi-brand switch verification laboratory. The testing process ...

Contact Us

For more information, pricing, or custom solutions, please contact us:

Website: <https://www.indzawo.co.za>

Email: sales@indzawo.co.za

Phone: +27 71 296 8473

Address: 22 Quantum Street, Midrand, 1685, Gauteng, South Africa

This document is for informational purposes only. Specifications subject to change without notice.

