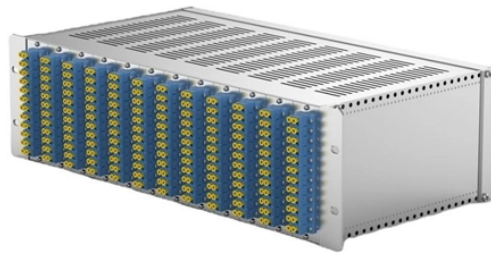


## Optical-to-electric converter connected to all-optical switch



## Optical-to-electric converter connected to all-optical switch



This chapter first discusses the basic principle of operation of OEO switching technology, with emphasis on the existing documented switching technologies deployed so far. It is followed by the working of ...



These O/E converters are ideal solutions for characterizing or troubleshooting high-speed optical signals in the system level testing. When used with the Infiniium V or Z series 33 GHz oscilloscope, the ...



The BrightEye™ 47 is an optical to electrical converter and distribution amplifier that supports high definition, standard definition, or ASI data rates. The optical input is converted to electrical form and ...



The V730 is a six-channel logic-level optical-to-electrical converter, packaged as a single-width, 6U VME module. When used with compatible Highland optical transmitter modules, the V730 provides fast, ...



Since the input signal intensity may be weaker than that of the source, an optical transistor amplifies the optical signal. The device is the optical analog of the electronic transistor that forms the basis of ...



Teledyne LeCroy's OE695G wide-band optical-to-electrical converter is ideal for measuring optical datacom and telecom signals with data rates from 622 Mb/s to 12.5+ Gb/s.



In this paper, we have proposed an all-optical switching principle using Kerr effect considering the passage of optical wave through a prism made of non-linear material like fused silica. ...



The OP710-ANX incorporates individual channels of optical to electrical (O/E) converters and is an easy-to-implement multichannel O/E converter for applications such as detecting and monitoring optical ...

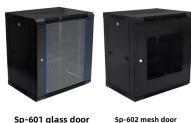


The 7707OE-3G-1 is equipped with an on-board optical power meter and can report the power to the card edge display in units of dBm. To indicate the input strength of the received signal, select the ...



An optical-to-electrical converter is the main component for designing optical instruments. As the name suggests it is a modulating device that converts incoming optical signals from a laser source to ...

Mesh door/glass door optional



5p-601 glass door    5p-602 mesh door

The 1 x 10 integrated optics coupler and the 10-cell photovoltaic array were custom designed and -processed for the optical-to-electrical power converter module.



High bandwidth, broadband O-to-E converter. Available in a range of configurations; choose from 1 or 2 channels, AC or DC coupling and various conversion gain and operating wavelength ranges.

## Contact Us

For more information, pricing, or custom solutions, please contact us:

Website: <https://www.indzawo.co.za>

Email: [sales@indzawo.co.za](mailto:sales@indzawo.co.za)

Phone: +27 71 296 8473

Address: 22 Quantum Street, Midrand, 1685, Gauteng, South Africa

This document is for informational purposes only. Specifications subject to change without notice.

