

Optical module used in GB100



Overview

There have been multiple variants of the electrical interface of optical modules that have been used over the years. The earliest forms of optical modules had an analog electrical interface. In the transmit direction, the optical module would directly drive the laser or LED with the analog signal coming from the front system card. In the receive direction, the module would directly drive the receive electrical interface with the o.



Optical module used in GB100



Explore the ultimate guide to optical modules. Learn types, functions, performance metrics & how to choose the right module for your fiber network.



Overview
Electrical Interface Types
Optical modulation and multiplexing types
In-module components
Electrical cable equivalent
Front panel optical module MSAs
On-Board Optical module MSAs
Users of Optical Modules



Explore the QSFP28 100G optical module, a vital component for high-speed network connections. Discover its unique features, advantages, and various types to meet diverse ...



In order to save power within the module, optical modules have been made that used the digital interface definition, such as the CEI, but without retiming the signals within the module. These ...



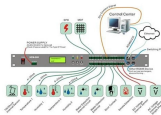
Optical module form factors refer to the physical dimensions of the module. The form factor determines the size and shape of the module and is essential for compatibility with other network ...



Site for Sore Eyes is home to Berkeley's largest selection of eyewear and contacts. Whether you are looking for discount frames, designer eyewear, specialty lenses, sports eyewear, sunglasses, or ...



Get more information for Montclair Optical Berkeley The Cutting Edge in Berkeley, CA. See reviews, map, get the address, and find directions.



Dual Reticle-Sized GPU Dies: The B100 and B200 GPUs utilize two reticle-sized dies. This design choice allows Nvidia to increase performance without transitioning to a smaller process ...



Montclair Optical Berkeley - The Cutting Edge Optical located at 2980 College Ave, Berkeley, CA 94705 - reviews, ratings, hours, phone number, directions, and more.



NVIDIA's GB100 GPU uses the Blackwell architecture and is made using a 5 nm production process at TSMC. GB100 does not support DirectX. For GPU compute applications, OpenCL version 3.0 and ...



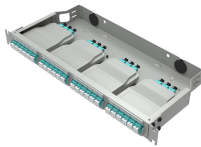
Our opticians are experts in prescription eyewear, vision, occupational eyeglasses, lenses, custom clip on sunglasses and transitions lenses. We service San Francisco, the local bay area, Oakland, East ...



Shop Target for optical products at great prices. Free shipping on orders \$35+ or free same-day pickup in store.



The GB100-886N-A1 package directly replaces NVIDIA's popular Hopper H100/H200 series products, which currently form the backbone of the world's installed AI training capabilities.



Learn about NVIDIA's latest GPUs, including the B100, B200, & GB200 GPUs. Discover how this latest architecture opens new levels of performance.



40G optical module refers to the optical module with a transmission rate of 40Gbps, CFP and QSFP are its main packaging forms, and 40G QSFP+ optical module is one of the more widely used ones. The ...



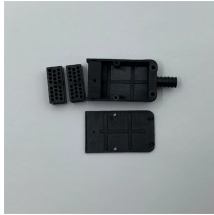
Montclair Optical Berkeley - An independent and locally-owned optical destination, specializing in custom prescription lenses and a curated selection of eyewear that reflects our commitment to ...



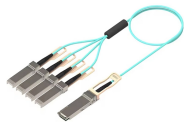
Find a Target Optical store near you to shop a wide selection of eyeglasses and sunglasses. Get expert eye care, book an eye exam, and discover the perfect eyewear for your style and vision needs.



One of the most intriguing aspects of the upcoming Blackwell is the mention of a Multi-Chip Module (MCM) design for the GB100 data-center GPU. This advanced packaging approach ...



This is a review for eyewear & opticians in Berkeley, CA: "Julia and Anissa "got" my aesthetic better than I myself do, and had the selection to deliver my hip dreams in my petite size, often a problem for me.



We're here to help you find the perfect eyewear. Visit Montclair Optical stores in Oakland and Berkeley, CA. Find our locations, hours, and contact information.

Contact Us

For more information, pricing, or custom solutions, please contact us:

Website: <https://www.indzawo.co.za>

Email: sales@indzawo.co.za

Phone: +27 71 296 8473

Address: 22 Quantum Street, Midrand, 1685, Gauteng, South Africa

This document is for informational purposes only. Specifications subject to change without notice.

