

# Optical Module COB Solution Packaging



## Overview

COB packaging technology stands out for its ability to integrate optical components directly onto a printed circuit board (PCB). This method uses epoxy resin adhesive to attach chips to the PCB, followed by wire bonding for electrical connections. Three common packaging methods—COB (Chip-on-Board), BOX (hermetic packaging), and coaxial (TO-CAN) packaging—each offer distinct advantages for different. Common optical device packaging methods include COB (chip-on-board packaging), BOX and coaxial packaging. Today, we will discuss the differences between them to help you better understand their characteristics and application scenarios.

## Optical Module COB Solution Packaging



100G Optical Module: BOX Package vs COB Package The advantages of COB packaging: The core advantages of the COB (Chip-on-Board) package are high integration and low cost. It ...



It involves encapsulating the optical chip in a metal box filled with inert gas (usually helium) to protect the optical elements from external environmental influences and enhance heat ...



Three common packaging methods—COB (Chip-on-Board), BOX (hermetic packaging), and coaxial (TO-CAN) packaging—each offer distinct advantages for different scenarios. ...



Get more information for Montclair Optical Berkeley The Cutting Edge in Berkeley, CA. See reviews, map, get the address, and find directions.



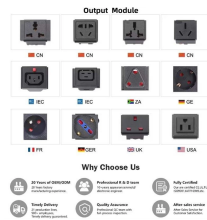
Common optical device packaging methods include COB (chip-on-board packaging), BOX and coaxial packaging. Today, we will discuss the differences between them to help you better ...



What makes COB packaging ideal for data center optical modules? COB packaging integrates components directly onto a PCB, enabling smaller form factors and higher density.



We're here to help you find the perfect eyewear. Visit Montclair Optical stores in Oakland and Berkeley, CA. Find our locations, hours, and contact information.



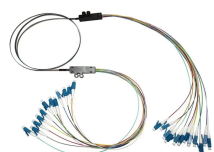
The above COB vs. BOX packaging transceiver optics comparison shows that COB packaging provides better electrical and thermal performance. In contrast, BOX packaging offers ...



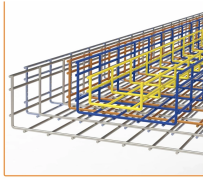
Explore the differences between COB and BOX packaging in optical modules. Discover their applications, costs, and suitability, limitation.



COB (Chip on Board) and BOX (Airtight Package) are two types of primary packaging technology in fibre optic transceivers, one solution can be advantageous over the other dependant ...



Montclair Optical Berkeley - An independent and locally-owned optical destination, specializing in custom prescription lenses and a curated selection of eyewear that reflects our commitment to ...



Shop Target for optical products at great prices. Free shipping on orders \$35+ or free same-day pickup in store.



This is a review for eyewear & opticians in Berkeley, CA: "Julia and Anissa "got" my aesthetic better than I myself do, and had the selection to deliver my hip dreams in my petite size, often a problem for me.



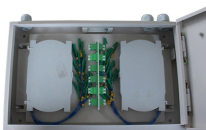
Find a Target Optical store near you to shop a wide selection of eyeglasses and sunglasses. Get expert eye care, book an eye exam, and discover the perfect eyewear for your style and vision needs.



We will introduce you to the basics of the two optical module package types: cob package and box package, and how they compare to each other.



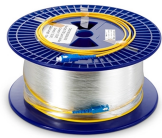
Our opticians are experts in prescription eyewear, vision, occupational eyeglasses, lenses, custom clip on sunglasses and transitions lenses. We service San Francisco, the local bay area, Oakland, East ...



Both COB and BOX packaging offer unique advantages that make them suitable for different scenarios in the rapidly advancing field of optical communications. As the industry ...



The above COB vs. BOX packaging transceiver optics comparison shows that COB packaging provides better electrical and thermal performance. In ...



Montclair Optical Berkeley - The Cutting Edge Optical located at 2980 College Ave, Berkeley, CA 94705 - reviews, ratings, hours, phone number, directions, and more.



Site for Sore Eyes is home to Berkeley's largest selection of eyewear and contacts. Whether you are looking for discount frames, designer eyewear, specialty lenses, sports eyewear, sunglasses, or ...

## Contact Us

For more information, pricing, or custom solutions, please contact us:

Website: <https://www.indzawo.co.za>

Email: [sales@indzawo.co.za](mailto:sales@indzawo.co.za)

Phone: +27 71 296 8473

Address: 22 Quantum Street, Midrand, 1685, Gauteng, South Africa

This document is for informational purposes only. Specifications subject to change without notice.

