

## Optical Flow Module Serial Port



### Overview

To enable the Holybro PMW3901 optical flow sensor in Ardupilot, set FLOW\_TYPE to 4 and SERIALx\_PROTOCOL to 18. If you are not sure which serial port you are using, here is a list of serial mapping for the Pixhawk 6 family: The micolink is a lightweight protocol customized by MicoAir Tech, prepared for developers who are ready to write their own code to read sensor data. MicoAssitant software can be used to configure protocol or other parameters of MTF-01. Step 1 : Connect the MTF-01 to PC by using the USB to TTL module. The data format is also compatible with discontinued product CX-OF, already supported by ArduCopter. This module replaces the lens on the original PMW3901, preventing dust from entering. The Cheerson CX-OF optical flow sensor is a lightweight and low cost optical flow sensor which can be used to improve horizontal position control especially in GPS denied environments. It uses a tracking sensor that is similar to what you would find in a computer mouse, but adapted to work between 80 mm and infinity.

## Optical Flow Module Serial Port



Arduino and Processing code for an A3080 or ADNS3080 optical flow sensor. For circuit layout watch the video: "will be online in a few days" or the layout.png on GitHub.



This module replace the lens on original PMW3901, prevent dust from entering into the sensor or looseness in high vibration environment. It also fully optimize the performance of PMW3901, no huge ...



Serial bus driver for the ThoneFlow-3901U optical flow sensor. Most boards are configured to enable/start the driver on a specified UART using the SENS\_TFLOW\_CFG parameter.



In the setup function, we have initialised the serial port for debug purposes followed by initialising the OLED display and the PMW3901 sensor. Once all the hardware is successfully initialised, it will ...



To enable the Holybro PMW3901 optical flow sensor in PX4, simply set SENS\_EN\_PMW3901 to enable, and the SENS\_TFLOW\_CFG to the corresponding port that sensor ...



PMW3901 is an optical flow ASIC that computes the flow internally and provides a difference in pixels between each frame. It uses a tracking sensor that is similar to what you would find in a computer ...



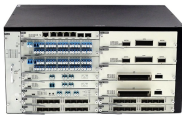
This module replace the lens on original PMW3901, prevent dust from entering into the sensor or looseness in high vibration environment. It also fully optimize the performance of PMW3901, no huge ...



Communication between 3901-L0X module and Flight controller via UART MSP V2 protocol supported by INAV and ArduPilot. There is no detailed datasheet of MSP V2 protocol.



The Cheerson CX-OF optical flow sensor is a lightweight and low cost optical flow sensor which can be used to improve horizontal position control especially in GPS denied environments.



Arduino and Processing code for an A3080 or ADNS3080 optical flow sensor. For circuit layout watch the video: "will be online in a few days" or the ...



Connect the MTF-01 module to the serial port of the flight controller, such as Telem2 on pixhawk. n depends on which serial port the MTF-01 connected, for example, n=2 when it connect to Telem2.

## Contact Us

For more information, pricing, or custom solutions, please contact us:

Website: <https://www.indzawo.co.za>

Email: [sales@indzawo.co.za](mailto:sales@indzawo.co.za)

Phone: +27 71 296 8473

Address: 22 Quantum Street, Midrand, 1685, Gauteng, South Africa

This document is for informational purposes only. Specifications subject to change without notice.

