

Operating Procedures for Polymer Cable Trays in Nigeria



Operating Procedures for Polymer Cable Trays in Nigeria



This Method Statement covers the installation of Cable Trays. This procedure is to define the method used to ensure that Cable Trays have been installed as per the contract requirement.



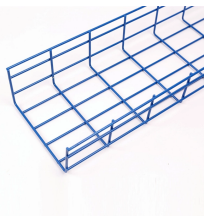
Make sure all surfaces of the pulling devices that come in contact with the cable and ladder tray are covered by a protective covering of plastic or tape to prevent surface scoring.



The document provides information about cable tray systems, including: - The six main types of cable trays: ladder, solid bottom, trough, channel, wire mesh, and ...



Only approved and undamaged cable trays and accessories (e.g., bends, tees, reducers, covers, supports, hangers, bolts) shall be used for installation.



est The test should be performed according to IEC 60068-2-75:2014 using the pendulum hammer. The test should be . arried out on samples of cable tray lengths or cable ladder lengths, of 250 mm \pm 5 ...



Step-by-step instrumentation cable tray installation guide with safety tips, standards, inspections, and downloadable Excel checklist.



Samples of ladder should consist of two side-members with one rung positioned centrally. Samples of mesh trays should be prepared in such a way that there will be a wire in the centre. Before the test, ...



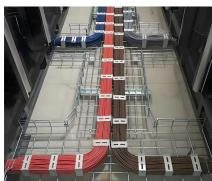
When fitting cable trays and their accessories, the products are cut on site to create changes of direction, adjust sections, etc. Damage can also occur during handling; as a result, both the ...



Below is a complete method statement for installation of cable tray, cable trunking and cable ladders in compliance with project specifications and approved material submittals.



Step-by-step instrumentation cable tray installation guide with safety tips, standards, inspections, and downloadable Excel checklist.



Every product undergoes rigorous quality inspections to ensure it meets strict performance standards before delivery. Our commitment to excellence has earned us recognition ...



The Cable Tray system is installed in electrical rooms, plant rooms, and service corridors. This section will guide you through the necessary steps to ensure a successful installation.



This procedure to clear the method of the supply, installations Cable Tray and Trunking System for the project. This document details the Cable Tray and Trunking System Installation : 1. ...

Contact Us

For more information, pricing, or custom solutions, please contact us:

Website: <https://www.indzawo.co.za>

Email: sales@indzawo.co.za

Phone: +27 71 296 8473

Address: 22 Quantum Street, Midrand, 1685, Gauteng, South Africa

This document is for informational purposes only. Specifications subject to change without notice.

