

Opening in the middle layer of the distribution box



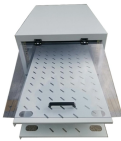
Overview

Open installation means the box is mounted directly on the surface of a wall, making it easy to access and service. It helps control and distribute electricity to different areas. This article discusses the construction of the distribution box, its functional divisions. A distribution box uses MCBs, RCDs, and busbars to protect circuits, prevent shocks, and ensure safe power distribution in homes and buildings. If you know. This Code of Practice provides the details of the general principles to be applied to the design of distribution substations, including substations located at ground floor, basement, upper floor level including at high level in high rise building and outdoor areas.

Opening in the middle layer of the distribution box



Learn what a distribution box is, its types, and how to choose the right one for your project. Includes clear examples and expert tips.



A distribution box uses MCBs, RCDs, and busbars to protect circuits, prevent shocks, and ensure safe power distribution in homes and buildings.



Open Installation: Here, the distribution box is fixed on the surface of walls or panels. This setup makes it easy to access and maintain, but the cables remain visible.



Do you worry about faulty wiring causing a fire in your home? Messy distribution boxes are dangerous and very hard to fix. This guide shows you how to organize ...



Do you worry about faulty wiring causing a fire in your home? Messy distribution boxes are dangerous and very hard to fix. This guide shows you how to organize circuit breaker wiring properly. You will ...



This article discusses the construction of the distribution box, its functional divisions, and selection tips. This article can help you better understand the internal structure of the distribution box, ...



Open installation means the box is mounted directly on the surface of a wall, making it easy to access and service. Concealed installation hides the box within the wall, providing a cleaner ...



Distribution box is an important component in building electrical installation, which is directly related to voltage distribution, electrical control and power supply. The performance of multiple functions is ...



What is a Distribution Box? A distribution box, or DB box, is a circuit breaker enclosure. It is a vital part and central hub of any electrical system. The hub distributes electrical power from a ...



Reasonable distribution of electrical energy, convenient to open and close the operation of the circuit. There is a high level of safety protection, can intuitively display the on/off state of the ...



Any service opening (e.g. cable trench outlet, trench or opening connecting to customer main switch room) shall be sealed to 2-hour FRR; this should also prevent passage of transformer insulant out of ...

Contact Us

For more information, pricing, or custom solutions, please contact us:

Website: <https://www.indzawo.co.za>

Email: sales@indzawo.co.za

Phone: +27 71 296 8473

Address: 22 Quantum Street, Midrand, 1685, Gauteng, South Africa

This document is for informational purposes only. Specifications subject to change without notice.

