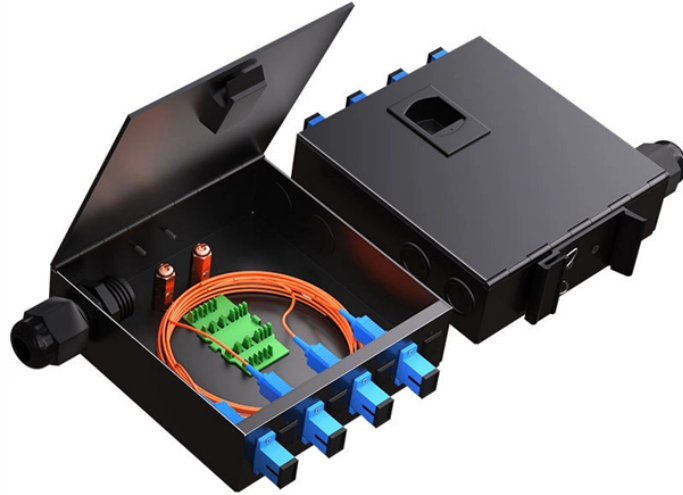


# OBGW Optical Cable Splice Box



## OBGW Optical Cable Splice Box



OPGW splice box provides essential features such as protection, sealing, ...



OPGW splice box provides essential features such as protection, sealing, compatibility, durability, easy access, temperature resistance, and modularity to ensure the reliability and longevity of OPGW cable ...




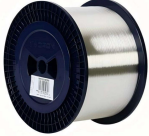




Fibre optic metal joint box/joint closure/splice closure is used for the continuation of the optical cable in the middle of the tower, which has the advantages of high mechanical strength, good sealing ...



The ADSS/OPGW Metal Junction Box, also known as a splicing box or Metal Joint Junction Box, is designed to house fiber core splices for outdoor intermediate optical cables.



To prove you're not a bot, solve this simple math problem. The machine translated document is now available for download.

	<p>The ADSS/OPGW metal junction box is also called a splicing box that is designed to house the fiber core splices to the outdoor intermediate optical cable leading to the patch panel in the control room.</p>
	<p>Creates a neater installation of the routing of the OPGW cables into the SB01 splice box. This eliminates the necessity of coiling extra OPGW cable onto the pole or tower.</p>
	<p>Designed for OPGW types with flexible plastic buffer tubes, the COYOTE Stainless Steel Splice Case provides dependable protection of fiber optic splices in the harshest of environments to create.</p>
	<p>Fibre optic metal joint box/joint closure/splice closure is used for the continuation of the optical cable in the middle of the tower, which has the advantages of high ...</p>
	<p>We are Fiber Splice Box manufacture and supplier, provide Fiber Optic Splice Closure / Opgw Cable Joint Box on sale,factory price.</p>
	<p>Furnished with four plugged cable ports (2 aluminum and 2 plastic) for either All-Dielectric Self-Supporting (ADSS) or Optical Ground Wire (OPGW) cables, the splice enclosure can be pre ...</p>



The OPGW (Optical Ground Wire) splice closure is a specialized device to protect and connect optical fibers within power utility networks. It accommodates both straight-through and ...

## Contact Us

For more information, pricing, or custom solutions, please contact us:

Website: <https://www.indzawo.co.za>

Email: [sales@indzawo.co.za](mailto:sales@indzawo.co.za)

Phone: +27 71 296 8473

Address: 22 Quantum Street, Midrand, 1685, Gauteng, South Africa

This document is for informational purposes only. Specifications subject to change without notice.

