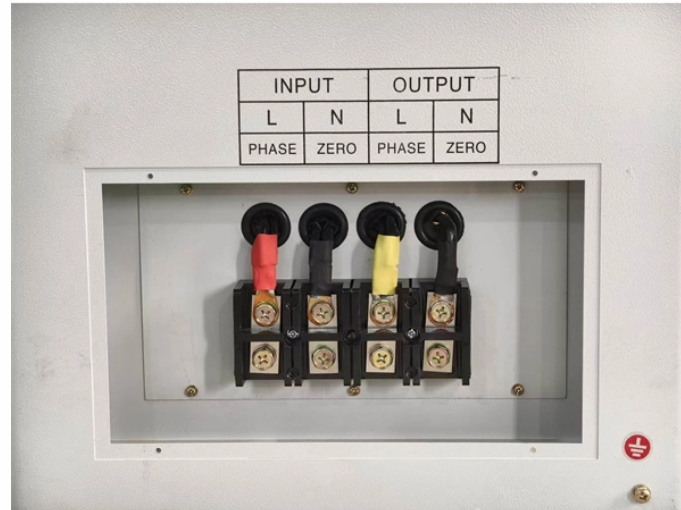


## Nigerian Standard Distribution Box Dimensions Diagram



## Nigerian Standard Distribution Box Dimensions Diagram



The distribution board has the function of delay and instantaneous overload protection. The distribution box is made out of high quality galvanized steel sheet of up to 0.6-1.2mm thickness.



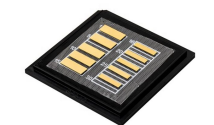
Director General/Chief Executive of Standards Organisation of Nigeria (SON) Mr. Osita Aboloma, has directed the Editorial Committee and the Standards Library Services to publish and ...



Any person engaged in the generation, transmission, distribution, system operation, and trading in electricity or in any aspect in the value chain of electricity supply, including but not limited to ...



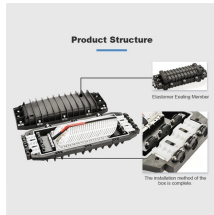
The range of Hager consumer units distribution boards offer to the market the most diverse & inclusive family of system products. With the unique blend of both classic designed and latest European ...



With detailed and clear Sketches, Illustrations and Dimensions, the Guidelines Manual will: Establish the step-by-step approach to design and construction of different sub-transmission power lines and town ...



Enclosure boxes are used in industrial, commercial, and residential settings to ensure organized wiring and compliance with safety standards, while protecting sensitive electrical equipment from damage.



This document provides specifications for various types of plastic distribution boxes, including their dimensions and features. It describes HA, HK, and LGD series boxes with dimensions ranging from ...



NESIS 5.2.12. Jointing Requirements for Overhead Distribution Conductors Joints between conductors of overhead distribution lines shall be mechanically secure and electrically continuous under the ...



The document provides details for designing the electrical distribution box and circuits for a residence. It includes specifications for the main circuit breaker such as size, type, and tripping capacity.



The ABB range of sheet steel distribution boards are designed for safety, reliability and availability in the electrical building installation.

## Contact Us

For more information, pricing, or custom solutions, please contact us:

Website: <https://www.indzawo.co.za>

Email: [sales@indzawo.co.za](mailto:sales@indzawo.co.za)

Phone: +27 71 296 8473

Address: 22 Quantum Street, Midrand, 1685, Gauteng, South Africa

This document is for informational purposes only. Specifications subject to change without notice.

