

Indzawo Optic Connect

Network rack air duct pricing



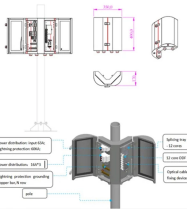
Network rack air duct pricing



The SRSWITCHDUCT is a rackmount ducting kit that pulls air in from the front of a standard rack cabinet and directs it to the side intake on equipment like network switches. Each duct is 2U tall, with ...



The SRSWITCHDUCT is a rackmount, ducting kit that pulls air in from the front of ...



This SmartRack® intake is ideal for supplying a constant flow of fresh, filtered air ...



The SRSWITCHDUCT is a rackmount, ducting kit that pulls air in from the front of the rack and directs is to the side intake on equipment such as network switches. ...



The PAN-AIRDUCT kit converts the PA-7050 next-generation firewall chassis cooling from side-to-side airflow to front-to-back airflow. The kit increases the rack unit (RU) size from 9U to 14U. Request ...



This SmartRack® intake is ideal for supplying a constant flow of fresh, filtered air to an under-ventilated wiring closet. Better airflow keeps your valuable rack components cool, helps boost system ...



The SRSWITCHDUCT is a rackmount, ducting kit that pulls air in from the front of the rack and directs it to the side intake on equipment such as network switches. Each duct is 2U tall, with one above and ...



Optimize your network switch cooling with the Eaton Tripp Lite SmartRack Side Airflow Ducting Kit. Features adjustable mounting rails and foam baffling for ...



Optimize your network switch cooling with the Eaton Tripp Lite SmartRack Side Airflow Ducting Kit. Features adjustable mounting rails and foam baffling for efficient airflow management.



The SRSWITCHDUCT is a rackmount, ducting kit that pulls air in from the front of the rack and directs it to the side intake on equipment such as network switches. Each duct is 2U tall, with one above and ...



This SmartRack® intake is ideal for supplying a constant flow of fresh, filtered air to an under-ventilated wiring closet. Better airflow keeps your valuable rack components cool, helps boost system ...



The SRSWITCHDUCT is a rackmount, ducting kit that pulls air in from the front of the rack and directs it to the side intake on equipment such as network switches. Each duct is 2U tall, with one above and ...



The SRSWITCHDUCT is a rackmount, ducting kit that pulls air in from the front of the rack and directs it to the side intake on equipment such as network switches.

Contact Us

For more information, pricing, or custom solutions, please contact us:

Website: <https://www.indzawo.co.za>

Email: sales@indzawo.co.za

Phone: +27 71 296 8473

Address: 22 Quantum Street, Midrand, 1685, Gauteng, South Africa

This document is for informational purposes only. Specifications subject to change without notice.

