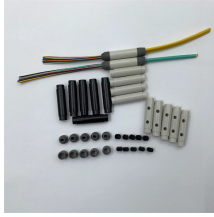


Naming conventions for cable tray accessories



Naming conventions for cable tray accessories



In designing supports for a cable tray system, consideration should be given to the loads associated with future cable additions and any additional loading that may be applied to the cable tray system (e.g., ...



For consistency with the corrosion resistance of accessories and cable trays, and minimise corrosion breaking lines due to the galvanic couple, we recommend the following assemblies:



Not all cable trays are equivalent. The mechanical and electrical characteristics, tests, certifications, overall quality management, recommendations mentioned in this technical guide only apply to our ...



Learn how to select the right cable tray accessories for safe, durable cable management. This guide covers materials, installation practices, and compliance with safety standards.



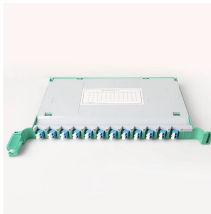
The design and cost of the cable tray is greatly affected by this designation. In order to determine the most appropriate and economical system, a class should be selected that reflects the actual total ...



Cut, bend, and connect the wire mesh trays to route cable and hose in configurations such as curves, slopes, and tees. They are a lightweight option for organizing bundles of cable and hose while ...



This document contains parts lists and drawings for a DLC176.00 cable tray system. It includes 20 items with names like cable troughs, main troughs, translation cable racks, and associated pins, bolts, ...



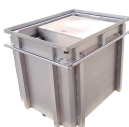
Standard naming conventions are outlined to identify parts by type, width, and other specifications. Dimensional drawings and installation details are also included. - Download as a PDF or view online ...



Learn about cable tray accessories, their types, uses, and importance in installation for safe and efficient cable management systems.



Selecting the right cable tray accessories is crucial for the safety, stability, and ease of maintenance of any electrical system. This article provides a comprehensive guide on the different ...



Eaton's submittal builder tool for B-Line series cable ladder and tray allows you to easily filter, select and download straight section, fitting and accessory submittals.



The tray can be cut and bent to the needs of the installer on the jobsite, allowing cable runs to be adjusted as needed. The wide range of sizes offered makes a great choice for everything from a ...

Contact Us

For more information, pricing, or custom solutions, please contact us:

Website: <https://www.indzawo.co.za>

Email: sales@indzawo.co.za

Phone: +27 71 296 8473

Address: 22 Quantum Street, Midrand, 1685, Gauteng, South Africa

This document is for informational purposes only. Specifications subject to change without notice.

