

## Myanmar Industrial Switch SFP



## Myanmar Industrial Switch SFP



Our Industrial Ethernet Switch portfolio comprises Managed and Unmanaged Switches with Gigabit, PoE, IEC 61850 certification, and for DIN rail mounting.



Myanmar SFP Cage & Connector Myanmar RJ45 Connector Myanmar Lan Transformer Myanmar Smart lighting solutions Myanmar Industrial switch Myanmar TE 5-2337992-8 Compatible 100/1000 ...



Managed PoE Switch 28-Port gigabit Layer 2 managed PoE switch, 4 SFP uplink 24-Port Gigabit L2 Managed POE Switch, 24 Gigabit RJ45 POE/POE+ Ports, 4 SFP Slots, 370W PoE power budget, 19 ...



Shop YuanLey 6 Port Industrial Switch with 4 Port PoE Gigabit, 1 1000Mbps Uplink, 1 SFP Port, Unmanaged DIN-Rail PoE Switch, IEEE802.3afat, 12Gbps Switching Capacity, IP40, VLAN, AI ...



Our switches are built for high network flexibility, cyber security and durability and are suitable for use in mission-critical environments.



The L3 Industrial 8-Port PoE Gigabit + 4-Port 10G SFP+ Managed Ethernet Switch provides 8\*PoE Gigabit downlink Ethernet ports, 4\*10 Gigabit uplink SFP ports. The product supports IEEE 802.3 ...



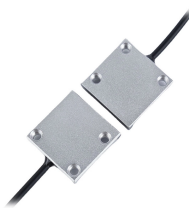
Managed Switches at the #1 Online Tech Retailer in Myanmar. Pay safely with MPU, Visa, Master, JCB, UnionPay, KBZPay, WavePay, OnePay, AYAPay & more. Best prices on all tech products are here. ...



Small Form-Factor Pluggable (SFP) and Multi-Source Agreement (MSA) compliant Wide operating temperature range of -40°- 85 °C (-40° - 185 °F) Supports data rates of up to 1.25Gbps ...



The Edgecore ECIS4500 PoE series are managed industrial PoE+ Gigabit Ethernet switches. The switches comply to the IEEE 802.3 af/at standard and are able to deliver up to 30 watts of power per ...



TRENDnet's 10-Port Hardened Industrial Gigabit DIN-Rail Switch, model TI-G102, has eight dedicated gigabit ports, plus two gigabit RJ-45 / SFP shared ports. Users are able to connect eight devices to ...

## Contact Us

For more information, pricing, or custom solutions, please contact us:

Website: <https://www.indzawo.co.za>

Email: [sales@indzawo.co.za](mailto:sales@indzawo.co.za)

Phone: +27 71 296 8473

Address: 22 Quantum Street, Midrand, 1685, Gauteng, South Africa

This document is for informational purposes only. Specifications subject to change without notice.

