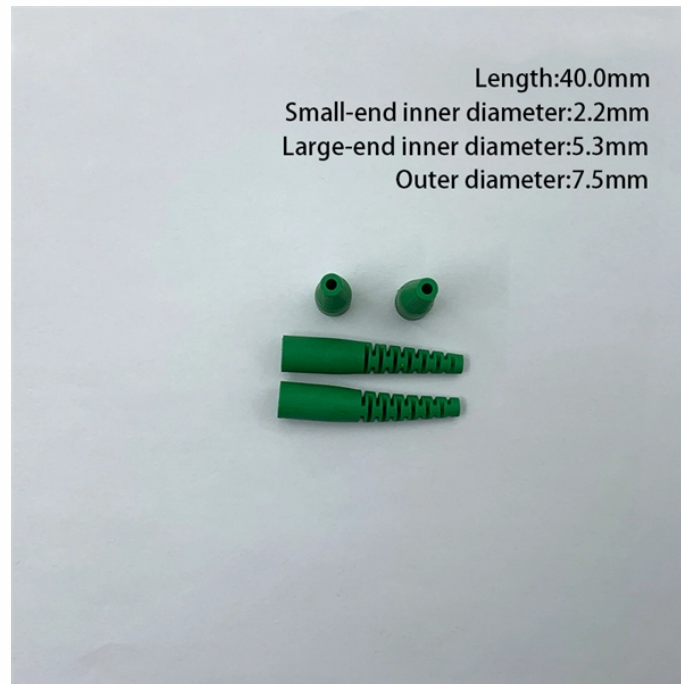


## Must cable trays be run horizontally



### Overview

The NEC requires that cable trays must be supported by members at an interval specified by the cable tray manufacturer, but not more than 5 feet for horizontal runs to support the weight of the cables and other loads. The NEC has a requirement for ladder-type cable trays. Proper installation can significantly reduce electromagnetic interference, prevent fire hazards, and improve overall efficiency. A rung spacing of 6 to 9 inches (150 to 230 mm) is preferable when the cable tray is used for instrumentation and control applications that require. Prohibited Areas: Cable trays cannot be used in hoistways or enclosed spaces and must remain accessible. Grounding: Metallic trays can serve as equipment grounding conductors (EGC) if they meet NEC requirements.

## Must cable trays be run horizontally



Cable tray is considered to be a system. It must provide continuous support for cables, and the electrical continuity of the cable tray system must be maintained.



Must is a modal verb. It is followed by the base form of a verb. You use must to indicate that you think it is very important or necessary for something to happen. You use must not or mustn't to indicate that ...



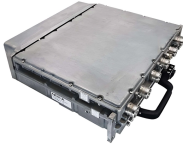
Cable securing: Cables must be secured within the tray at intervals not exceeding 3 meters (10 feet) in horizontal runs per 392.20 (A). In vertical runs, cables must be supported at ...



Something that is absolutely required or indispensable. Promptness on the job is a must. Comfortable boots are a must when going on a hike.



**MUST** definition: to be obliged or bound to by an imperative requirement. See examples of must used in a sentence.



To ensure that a cable tray is safe, all the bolts should be tight, and all the connections should also be clean. Without a properly bonded tray, the tray will not insulate the building in case of ...



This article explains the main requirements and good practices for cable tray systems, including tray types, materials, loading, supports, bonding, cable selection, and installation details.



Some cable tray systems are appropriate for under floor use, despite the fact that they are normally suspended from ceilings (or) attached to walls. ...



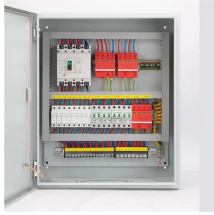
"Must" is a modal verb most commonly used to express certainty. It can also be used to express necessity or strong recommendation, although native speakers prefer the more flexible form "have to."



For ladder or ventilated trough trays, the total sum of the cross-sectional areas of all the cables to be installed in the cable tray must be equal to or less than the allowable cable area for the tray width, as ...



Spacing Standards: Electrical (power) and instrumentation (signal/control) cable trays should maintain a minimum vertical and horizontal distance. Industry standards often recommend at least 300mm (12 ...



All metallic cable trays must be grounded as outlined in NEC Article 250.96, even if the tray isn't being used as an equipment grounding conductor (EGC). This precaution helps prevent ...



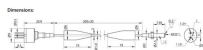
Have to is a more informal while Must is mostly used in written orders or instructions. Also, Must expresses obligation imposed by the speaker while Have to expresses external obligation.



The meaning of MUST is be commanded or requested to. How to use must in a sentence.



We usually use must to talk about obligations which come from the speaker and we generally use have (got) to when we refer to obligations that come from outside the speaker. ...



There are 27 meanings listed in OED's entry for the verb must, four of which are labelled obsolete. See "Meaning & use" for definitions, usage, and quotation evidence.



How much horizontal space is needed between power cable trays and signal cable trays? To minimize electromagnetic interference (EMI), the horizontal spacing between power and ...



At least one expansion joint shall be installed in any cable tray run where the expansion of the cable tray due to the maximum probable temperature change during and after installation could damage the ...



The NEC requires that cable trays must be supported by members at an interval specified by the cable tray manufacturer, but not more than 5 feet for horizontal runs to support the weight of ...

## Contact Us

For more information, pricing, or custom solutions, please contact us:

Website: <https://www.indzawo.co.za>

Email: [sales@indzawo.co.za](mailto:sales@indzawo.co.za)

Phone: +27 71 296 8473

Address: 22 Quantum Street, Midrand, 1685, Gauteng, South Africa

This document is for informational purposes only. Specifications subject to change without notice.

