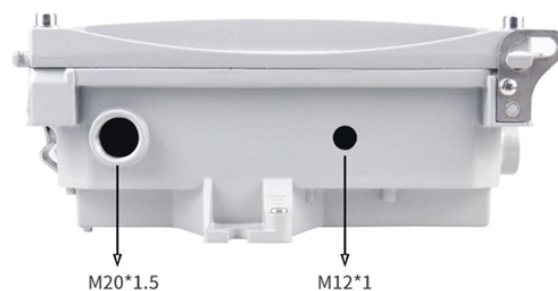


# Methods for hoisting horizontal bars onto cable trays



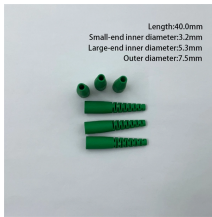
## Overview

Horizontal hoisting is a common method for installing cable trays, especially when overhead support is available. Cable trays are indispensable components in modern construction and industrial environments, providing a structured and efficient way to manage and support electrical cables. They ensure organized routing, protection, and accessibility for various wiring systems. Only two splices are required to securely connect tray widths of wire basket tray. This system allows for very little. The purpose of this article is to define the sequence and methodology for the installation of electrical cable trays, cable trunking, cable raceways and boxes, junction and pull boxes. Cable tray system design shall comply with National Electrical Code® (NEC® ) Article 392, NEMA VE 1, and NEMA FG 1 and follow safe work practices as described in NFPA 70E.

## Methods for hoisting horizontal bars onto cable trays



Horizontal hoisting is a common method for installing cable trays, especially when overhead support is available. This method primarily relies on two key accessories: hoisting frames ...



Some applications may require the cable tray to support the weight of a single, dead object in addition to the cable loads. Specifications typically require this to be applied at the midpoint of the span between ...



General Installation Guidelines: latest NEMA standards and local building codes. Trough tray field support and frequency depends on the weight and construction (splice locations, elbow fittings, etc.) ...



This document provides the method statement for installing cable trays and ladders at a data center project site. It outlines the scope, materials, equipment, responsibilities, and steps for storage, pre ...



This document provides the method statement for installing cable trays and ladders at a data center project site. It outlines the scope, materials, equipment, ...



The purpose of this article is to define the sequence and methodology for the installation of electrical cable trays, cable trunking, cable raceways and boxes, ...



Bend side wires on both sides of the tray and reassemble using adjustable clamps to attach side rail edge and universal splices to attach tray bottoms. To form a horizontal cross, proceed in the same ...



Electrically trained specialists charged with installing cable support systems and cable trays. These instructions are based on the standards valid at the time of compilation (12/2023). Please read the ...



This guide covers cable ladder systems, cable tray systems, channel support systems and associated supports intended for the support and accommodation of cables and possibly other electrical ...



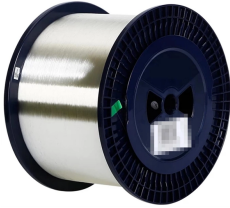
To limit damage, straight lengths should be bundled and shipped on a flat deck trailer. Straight lengths are shipped without exterior crating. Fittings and ancillary products are often boxed/palletized and ...



We also have the Electrical Box Attachment that can be used to attach a electrical box onto the side of your cable tray raceways. Plus we sell a Ground Bolt that can be used at any location of the tray for a ...



The following recommendations are intended to be a practical guide to ensure the safe and proper installation of cable ladder and cable tray systems



Each tray section should be bonded to an adjoining section using listed bonding jumpers or a continuous ground wire and clamps (such as a copper ground bolt). Powder coated tray requires the removal of ...

## Contact Us

For more information, pricing, or custom solutions, please contact us:

Website: <https://www.indzawo.co.za>

Email: [sales@indzawo.co.za](mailto:sales@indzawo.co.za)

Phone: +27 71 296 8473

Address: 22 Quantum Street, Midrand, 1685, Gauteng, South Africa

This document is for informational purposes only. Specifications subject to change without notice.

