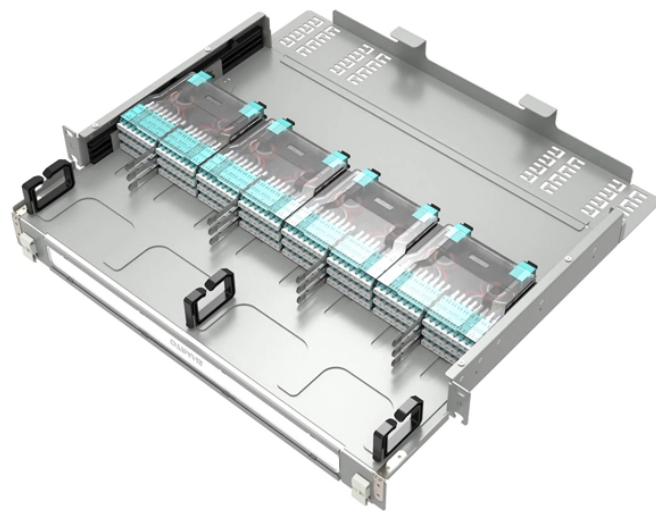


Method for binding the main line of the distribution box



Overview

Wiring Direction: Wiring between the main circuit breaker and each branch circuit breaker in the box generally goes on the left, and the wiring out of the distribution box generally goes on the right. Binding Requirements: The wires should be bound with plastic. Connection method: Each switch takes a wire from the incoming point and connects it to the incoming end of the switch, or uses parallel connection to reduce the difficulty of wiring. Check for proper IP/NEMA ratings and material quality. Ensure safe placement: install in dry, accessible areas with good ventilation and at appropriate height (typically ~1. Practice good wiring: secure. The metal parts of raceways and/or enclosures containing service conductors must be bonded together [250. You can use standard locknuts to make mechanical connections to raceways, but you cannot use them. Whether upgrading an aging electrical panel or setting up your facility, this guide will walk you through the critical steps to installing an MCB Distribution Box safely.

Method for binding the main line of the distribution box



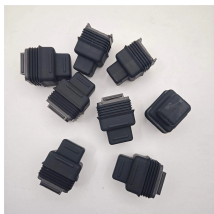
METHOD STATEMENT FOR Electric panel and distribution box installation and termination - Free download as PDF File (.pdf), Text File (.txt) or read online for free. This document provides a method ...



Binding Requirements: The wires should be bound with plastic ties. The size of the ties should be appropriate and the spacing should be uniform to ensure that the wires are straight and ...



Learn how to safely install an MCB distribution box with this comprehensive guide. Step-by-step instructions to ensure correct installation.



That could result in tragic consequences. Try this verification method. On an installation drawing, mark all of the points where a bonding jumper should provide a fault path back to the source. Then walk ...



Hey, in this article we are going to see the Single Phase Distribution Box Wiring Diagram and Connection Procedure. A distribution board or distribution box is where the main power supply is ...



Distribution Box Installation: Put the distribution box on the installation surface, and align the position of the expansion bolts and tighten the screws. This step needs to be checked carefully, ...



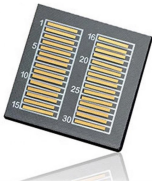
Terminal connection: Connect the input and output lines to the terminals in the distribution box in accordance with the principle of "phase wire to phase wire terminal, zero wire to ...



Introduction
 Understanding The Components of A Distribution Box
 Selecting The Right Distribution Box
 Site Preparation and Location
 Requirements
 Electrical Connections and Wiring
 Compliance with Standards and Regulations
 Conclusion
 Proper installation of a distribution box isn't just a technical requirement. It's a vital step in ensuring the safety and efficiency of your entire electrical system. Following best practices reduces the risk of electrical fires, power outages, and other hazards, protecting your property and keeping everyone safe. If you're looking for a reliable, ... See more on eabel
 Published: Feb 7, 2025
 Mike Holt Enterprises



Video transcript: I'm going to feed the main line in from underneath. You have to be really careful when you're feeding large-gauge wire through the concentric knockouts because you can definitely ...



Whether you're an electrician or a DIY enthusiast, this tutorial will help you understand the fundamentals of wiring a distribution box for a residential setup.



In this guide, we'll break down everything you need to know to install a distribution box correctly and confidently. Choose the right box based on environment (indoor/outdoor), load ...

Contact Us

For more information, pricing, or custom solutions, please contact us:

Website: <https://www.indzawo.co.za>

Email: sales@indzawo.co.za

Phone: +27 71 296 8473

Address: 22 Quantum Street, Midrand, 1685, Gauteng, South Africa

This document is for informational purposes only. Specifications subject to change without notice.

