

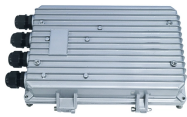
Mali Long-Span Cable Tray Parts



Mali Long-Span Cable Tray Parts



All trays (except 14A) and rungs are designed to handle cable loads plus 200 lbs. of concentrated load for any tray width. For example, strut rung #11118 can handle 489 lbs. at a 36”.



Browse or download the Cable Tray catalog for more information on our line of cable tray and ladder systems. As the cost of structural steel continues to increase, the impact of reducing the quantity of ...



Install a set of tensioning devices under the cable tray. The galvanized cable tray forms an arch under the tension of the tensioning tendons. This generates compression on the lower cover plate of the ...



As a professional cable tray manufacturer, we design these parts with reinforced ...



Refers to the approximate height of a cable tray used for specifying. Selecting a specific height will show cable trays with that height, as well as cable tray accessories compatible with that height.



The long-span cable tray adopts the structure of a strengthened side plate, which greatly increases the load capacity of the bridge. The product is suitable for the installation of long-span lines.



As a professional cable tray manufacturer, we design these parts with reinforced geometry, corrosion-resistant coatings, and precision-cut interfaces that maintain alignment under vibration or thermal ...



Choose from our selection of cable trays, including over 850 products in a wide range of styles and sizes. Same and Next Day Delivery.



These longer-length cable tray sections are ideal for industrial and commercial applications such as roadway crossings and pipe bridges or lowering installation costs by reducing the number of ...



High-strength structural parts engineered by a cable tray manufacturer, offering durable support and compatible cable tray accessories for safe installations.



Our wind certification report provides you with list of acceptable B-Line series cable tray supports, fittings and covers based off of the environmental conditions, cable loading, and type of cable tray in your ...

Contact Us

For more information, pricing, or custom solutions, please contact us:

Website: <https://www.indzawo.co.za>

Email: sales@indzawo.co.za

Phone: +27 71 296 8473

Address: 22 Quantum Street, Midrand, 1685, Gauteng, South Africa

This document is for informational purposes only. Specifications subject to change without notice.

