

Maintenance of 400G optical module and 10G



Overview

This article will explore best practices for deploying 10G optical modules and offer tips for troubleshooting and maintaining their performance to maximize the longevity and efficiency of your network. 10G SFP+ optical modules remain one of the most widely deployed transceiver solutions in data centers, telecom networks, enterprise switching, and cloud-scale architectures. Their compact size, low power consumption, and versatility across multimode and single-mode fiber make them a critical. Webex spaces will be moderated by the speaker until June 13, 2025. Are pluggable optics dead or alive for the AI era?

Are pluggables relevant in the AI era?

Majority of the switch ports in AI back-end Networks to be 800 Gbps in 2025 and 1600 Gbps in 2027, showing a very fast migration to the. An optical module is an optoelectronic conversion device that transmits data by converting electrical signals into optical signals. Common types of optical modules include SFP, SFP+, SFP28, QSFP, QSFP28, etc. Switching speed is

always driven by the upstream server speed. For example, SFP-10G-BXD1 must be used with SFP-10G-BXU1.

Maintenance of 400G optical module and 10G



Discover the 9 types of maintenance and how they fit into preventive and corrective strategies. Learn when each applies in practice. [Click here to read the article.](#)



Equipment and electrical serdes can evolve through 3 generations (25 Gb/s, 50 Gb/s or 100 Gb/s) without changing the optical interface that interconnects your equipment.



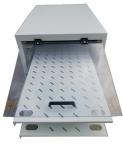
A 400G optical module is a transceiver product with a data rate of 400 gigabits per second (Gbps). The QSFP-DD (Quad Small Form-Factor Pluggable Double Density) is one of the ...



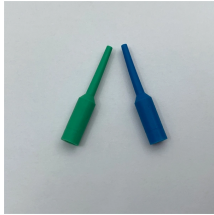
The meaning of MAINTENANCE is the act of maintaining : the state of being maintained : support. How to use maintenance in a sentence.



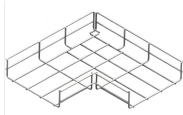
MAINTENANCE meaning: 1. the work needed to keep a road, building, machine, etc. in good condition: 2. money that a.... [Learn more.](#)



Long- and short-range optical connectivity options are suited to a wide range of data center and campus applications. For the shortest connections, passive copper direct attach cable (DAC) is a simple and ...



Arista's Optical Modules and Cable portfolio offer a wide variety of high-density and low-power 800G (dual 400G), 400G, 200G, 100G, 50G, 40G, 25G, 10G, 1G, and 100M Ethernet connectivity options ...



Deployment of an optical connectivity solution allows for an infrastructure that meets these requirements for current and future data rates - all the way to 400G.



All action taken to retain materiel in or to restore it to a specified condition. It includes: inspection, testing, servicing, classification as to serviceability, repair, rebuilding, and reclamation.
2. All supply ...



Maintenance functions can be defined as maintenance, repair and overhaul (MRO), and MRO is also used for maintenance, repair and operations. Over time, the terminology of maintenance and ...



Length:52.0mm
Small-end inner diameter:2.0mm
Large-end inner diameter:4.8mm
Outer diameter:6.5mm

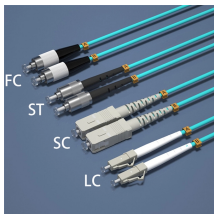
A comprehensive guide covering the concept of maintenance, its different types, advantages, and its uses across industries.



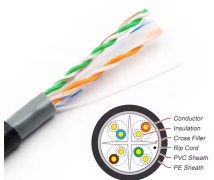
Maintenance Definition An activity necessary to keep an asset functioning as designed during its operations and maintenance phase of a project.



Understand about the most important concepts of maintenance, preventive, predictive, and reactive maintenance strategies. Explore key areas like reliability-centered maintenance, ...



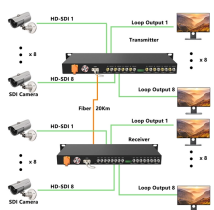
Understanding the nuances of optical transceiver speeds is critical for network engineers tasked with designing and maintaining modern data center and enterprise networks. This optical ...



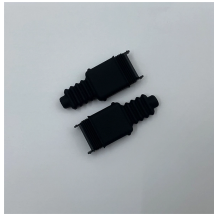
The maintenance of a building, vehicle, road, or machine is the process of keeping it in good condition by regularly checking it and repairing it when necessary.



A complete professional guide covering all key installation, cleaning, ESD, compatibility, environmental, and safety precautions for 10G SFP+ optical modules.



As an essential component of network communication, optical modules have been widely used in various scenarios such as data centers, enterprise LANs, and WANs. An optical module is ...



This article will explore best practices for deploying 10G optical modules and offer tips for troubleshooting and maintaining their performance to maximize the longevity and efficiency of your ...



Single-fiber bidirectional (BIDI) optical modules must be used in pairs. For example, SFP-10G-BXU1 must be used with SFP-10G-BXD1.



Maintenance combines proactive and reactive actions to keep machinery, facilities, and equipment running efficiently and safely. Different types of maintenance, like preventive, predictive, ...

Contact Us

For more information, pricing, or custom solutions, please contact us:

Website: <https://www.indzawo.co.za>

Email: sales@indzawo.co.za

Phone: +27 71 296 8473

Address: 22 Quantum Street, Midrand, 1685, Gauteng, South Africa

This document is for informational purposes only. Specifications subject to change without notice.

