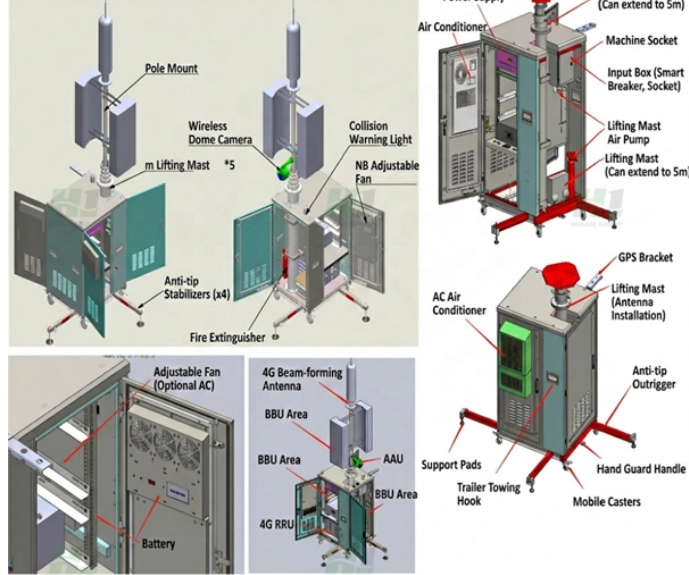


Main application wavelengths in fiber optic communication

Product Composition Description



Main application wavelengths in fiber optic communication



Explore the key characteristics of optical wavelength bands, how they support WDM systems like DWDM, CWDM, MWM, and LWDM, and their roles ...



Fiber wavelengths used in telecommunications range from 770nm to 1675nm, but you focus on 1310nm and 1550nm because they offer the best combination of low attenuation and ...



The three prime wavelengths for fiber optics, 850, 1300 and 1550 nm drive everything we design or test. NIST (the US National Institute of Standards and Technology) provides power meter calibration at ...



Optical fibers use infrared wavelengths to transmit data over long distances at high speeds. Different wavelengths of light interact with fiber optic materials in various ways.



In this article, we will explore what wavelengths are used in fiber, why those wavelengths are chosen, what lesser-known wavelength regimes exist (and sometimes surprise engineers), and ...



The secret lies in the fiber's ultra-low loss transmission windows at specific wavelength bands tailored to different network roles. Let's shine a light on what makes each band unique.



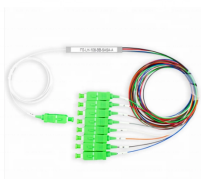
Understanding wavelengths in fiber optics. Learn the differences, applications, and benefits of various wavelengths.



In this article, we will explore what wavelengths are used in fiber, why those wavelengths are chosen, what lesser-known wavelength regimes exist (and ...



In modern fiber-optic communication systems, Optical Transmission Wavelength plays a decisive role in determining network performance. Therefore, understanding how wavelengths work ...



The standardized wavelength bands are the fundamental building blocks of modern fiber optic communication, enabling the efficient and reliable transmission of the vast amounts of data that ...



Explore the key characteristics of optical wavelength bands, how they support WDM systems like DWDM, CWDM, MWDM, and LWDM, and their roles in modern fiber networks.



Wavelength-division multiplexing (WDM) is the technique of transmitting multiple channels of information through a single optical fiber by sending multiple light beams of different wavelengths through the ...

Contact Us

For more information, pricing, or custom solutions, please contact us:

Website: <https://www.indzawo.co.za>

Email: sales@indzawo.co.za

Phone: +27 71 296 8473

Address: 22 Quantum Street, Midrand, 1685, Gauteng, South Africa

This document is for informational purposes only. Specifications subject to change without notice.

