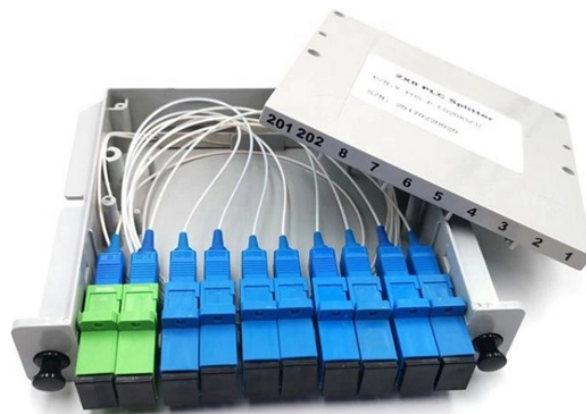


Machining Process of Distribution Box Shell



Overview

In this video, we will introduce the production process of distribution box shell factory in China——E-Abel. This article walks you through the complete distribution box manufacturing process, covering each step. The box production process for electrical enclosures is a systematic workflow ensuring the manufacturing of high-quality electrical boxes, meter boxes, cabinets, and GGD enclosures. With years of experience in this industry, our factory can provide you with superior quality. Legal status (The legal status is an assumption and is not a legal conclusion. Google has not performed a legal analysis and makes no representation as to the accuracy of the status listed.) Current Assignee (The listed assignees may be inaccurate. It includes parameters for materials, forming capabilities, speed, and quality, along with a description of the production line's components and. In the world of low-voltage power distribution, the quality of an electrical distribution box determines the safety, reliability, and service life of the entire system.

Machining Process of Distribution Box Shell



The invention relates to the field of forming of fiber distribution box shells, in particular to automatic forming equipment for a fiber distribution box shell.



Distribution boxes - the unsung heroes tucked away in utility closets or basements - are more than just metal shells. They're sophisticated control centers managing electricity flow safely. ...



In the world of low-voltage power distribution, the quality of an electrical distribution box determines the safety, reliability, and service life of the entire system. Have you ever wondered ...



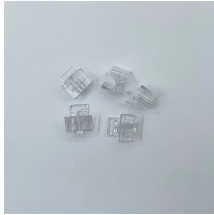
Under the frictional damping action of the forming roller and pressure roller, after entering the bending part at a linear speed of 0-13m, the box is cut and bent as required, and then manually packed away.



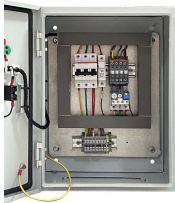
The document details the technical specifications and production process of a distribution box roll forming machine by Shenzhen Superda Machine Co., Ltd. It ...



Learn the step-by-step distribution box manufacturing process—from design and material selection to assembly and testing. E-abel provides high-quality electrical enclosures with customization options ...



Box production process for electrical enclosures—steps from material planning to inspection, with solutions to plasma cutting issues.



process of it. The process starts with punching the stainless steel plate to create a hole. After that, the sheet is bent



In this video, we will introduce the production process of distribution box shell factory in China——E-Abel.



Whilst the box is being cut out, we take the components out of stock and give them to one of our wiremen. When the rubber box itself is ready, the wireman receives it and proceeds to assemble the ...

Contact Us

For more information, pricing, or custom solutions, please contact us:

Website: <https://www.indzawo.co.za>

Email: sales@indzawo.co.za

Phone: +27 71 296 8473

Address: 22 Quantum Street, Midrand, 1685, Gauteng, South Africa

This document is for informational purposes only. Specifications subject to change without notice.

